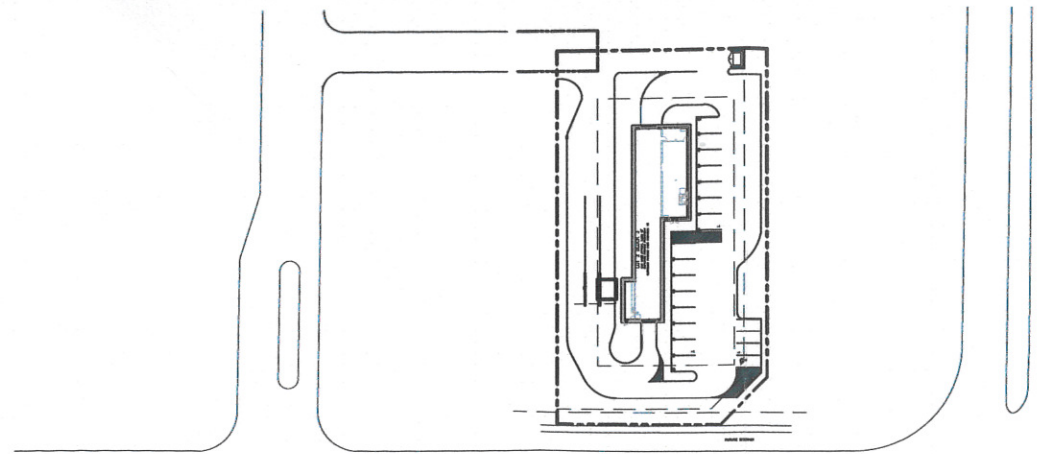


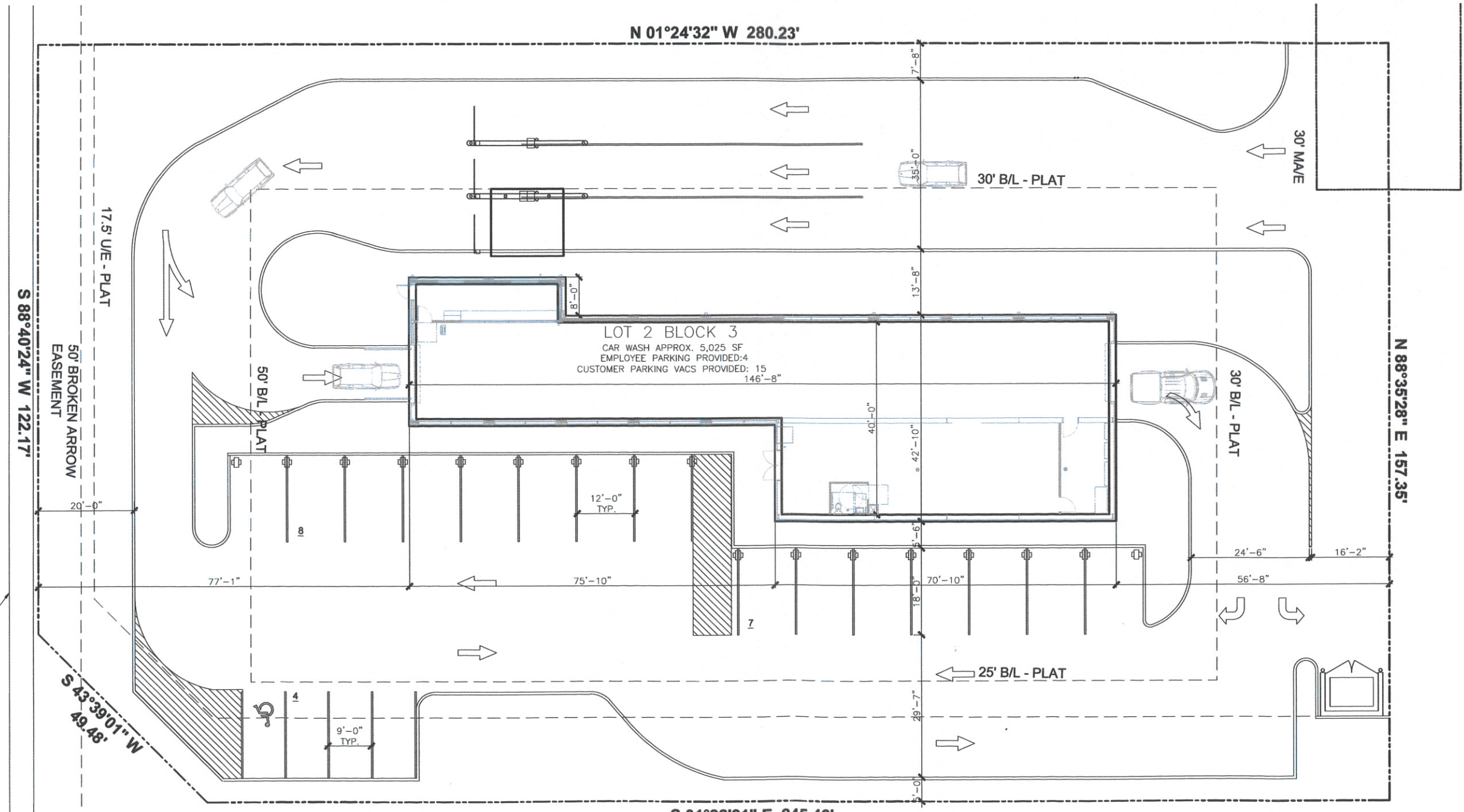
EXHIBIT C
 NOTE: NOT FOR CONSTRUCTION. FOR PETITION TO
 AMEND THE COMPREHENSIVE PLAN BY THE CITY OF
 BROKEN ARROW



wdesign
 ARCHITECTURE & INTERIORS
 815 E. 3rd Street, Suite C
 Tulsa, OK 74120
 Office: 918.794.6616
 Fax: 918.794.6602
 www.wdesignsite.com

SEAL:

2 SITE PLAN
 SCALE: 1/64" = 1'-0" +/- 1.01 ACRES



1 SITE PLAN
 SCALE: 3/32" = 1'-0" +/- 1.01 ACRES



PROJECT:
**PAT'S CAR WASH
 BROKEN ARROW**
 PROJECT #
 17214
 LOT 2, BLOCK 3
 NORTHEAST
 CROSSROADS
 ZONING: PUD-175
 CONSULTANT:

REVISIONS:
 CITY OF BROKEN ARROW

MAY 22 2018

RECEIVED

ISSUE DATE:
 05.21.2018

SHEET NAME:
 SITE PLAN

SHEET #:

A101