

Basis of Bearings

BASIS OF BEARINGS FOR SAID TRACT IS OKLAHOMA STATE PLANE COORDINATE SYSTEM ZONE NORTH USING THE SOUTHWEST CORNER OF THE SOUTHWEST QUARTER OF SECTION 30 AS NORTH 88°43' WEST.

Monumentation

ALL INTERIOR CORNERS SHOWN HEREON WERE SET USING A 3/8" x 18" STEEL PIN WITH A GREEN PLASTIC CAP STAMPED "FRITZ 1694" AT ALL CORNERS.

ADS Benchmark

5/8" REBAR 1 1/2" ALUMINUM CAP-FLUSH-STAMPED "BA 18" SET SOUTHWEST OF 111TH STREET AND MINGO ROAD. ELEVATION = 653.840 (NAVD 1989).

Notes

ALL STREET RIGHT-OF-WAY SHALL BE DEDICATED AS PUBLIC STREETS BY THIS PLAT.

ADDRESS SHOWN ON THIS PLAT WERE ACCURATE AT THE TIME THIS PLAT WAS FILED. ADDRESSES ARE SUBJECT TO CHANGE AND SHOULD NEVER BE RELIED ON IN PLACE OF LEGAL DESCRIPTION.

ALL WATER AND SANITARY SEWER SERVICES WILL BE SUPPLIED AND MAINTAINED BY THE CITY OF BROKEN ARROW, OKLAHOMA.

Summary

SUBDIVISION CONTAINS EIGHTY-EIGHT (88) LOTS IN NINE (9) BLOCKS. TWO (2) RESERVE AREAS AND FOUR (4) TRAFFIC CONTROL MEDIANS. GROSS SUBDIVISION AREA: 1,435,878.43 SF / 32,963 AC.

Berwick South

A TRACT OF LAND SITUATED IN THE SOUTHWEST QUARTER (SW/4) OF SECTION 30, TOWNSHIP 18 NORTH, RANGE 14 EAST, OF THE INDIAN BASE AND MERIDIAN, CITY OF BROKEN ARROW, TULSA COUNTY, STATE OF OKLAHOMA, ACCORDING TO THE U.S. GOVERNMENT SURVEY THEREOF.

Legend

- BL - BUILDING SETBACK LINE
FL/E - FENCE & LANDSCAPE EASEMENT
LNA - LIMITS OF NO ACCESS
TCM - TRAFFIC CONTROL MEDIAN
U/E - UTILITY EASEMENT
SMA - STREET ADDRESS

Owner / Developer

RLAND DEVELOPMENT, LLC
8555 EAST 101ST STREET, SUITE F
TULSA, OKLAHOMA 74133
PHONE: (918) 582-4300
MR. E. BLAKE HASTINGS

Engineer

ROSENBAUM CONSULTING, LLC
1709 WEST GRANGER STREET
BROKEN ARROW, OKLAHOMA 74012
PHONE: (918) 798-0210
FAX: (918) 517-3211
BARRICK.ROSENBAUM@COX.NET
C.A.# 6470 EXPIRES 6-30-2017

Surveyor

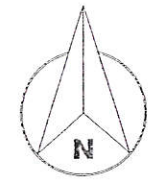
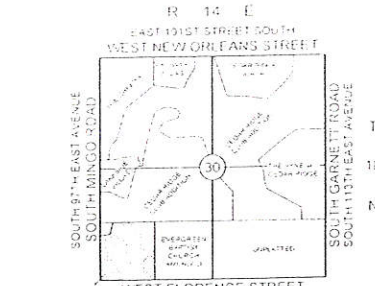
FRITZ LAND SURVEYING, LLC
2017 WEST 91ST STREET
TULSA, OKLAHOMA 74132
PHONE: (918) 231-0575
EMAIL: FRITZPLS@YAHOO.COM
C.A.# 5848 EXPIRES 6-30-2016

Backflow Preventer Valve Table

Table with columns: BLOCK, LOT, FINISHED FLOOR ELEVATION, UPSTREAM MANHOLE, MANHOLE RIM ELEVATION. Lists 15 lots and their corresponding manhole elevations.

Stormwater Detention Determination

STORMWATER DETENTION ACCOMMODATIONS FOR THIS SITE ARE PROVIDED IN ACCORDANCE WITH FEE-IN-LIEU OF DETENTION DETERMINATION DD# 81012-14.



Scale 1" = 100'
0 50 100 200

STATE OF OKLAHOMA
COUNTY OF TULSA
I, Pat Key, Tulsa County Clerk, do hereby certify that the foregoing is a true and correct copy of the same as recorded in my office.

CERTIFICATE

I hereby certify that all real estate taxes involved in this plat have been paid as reflected by the current tax rolls. Security as required has been provided in the amount of \$1,590.00 per trust receipt no. 14291 to be applied to 2016 taxes.

Dated: 03/20/2016
Dennis S. Jones
Tulsa County Clerk

STATE OF OKLAHOMA
COUNTY OF TULSA

I, PAT KEY, TULSA COUNTY CLERK, IN AND FOR THE COUNTY AND STATE ABOVE, DO HEREBY CERTIFY THAT THE FOREGOING IS A TRUE AND CORRECT COPY OF A LIKE INSTRUMENT NOW ON FILE IN MY OFFICE.

DATED THE 20th DAY OF March 2016

PAT KEY, TULSA COUNTY CLERK

DEPUTY

APPROVED 5/19/15 BY THE CITY COUNCIL OF THE CITY OF BROKEN ARROW, OKLAHOMA
Craig A. Thorne
MAYOR
Jana Brockford
ATTST CITY CLERK

Curve Table

Table with columns: CURVE, ARC LENGTH, RADIUS, DELTA BEARING, CHORD BEARING, CHORD LENGTH. Lists 28 curves with their respective dimensions.

Line Table

Table with columns: LINE, BEARING, DISTANCE. Lists 50 lines with their respective bearings and distances.



BE THE ACTUAL FINISH FLOOR ELEVATION IS LOWER THAN ONE (1) FOOT ABOVE THE TOP OF RIM ELEVATION OF THE UPSTREAM MANHOLE, IT SHALL BE THE BUILDERS RESPONSIBILITY TO INSTALL A BACKFLOW PREVENTER VALVE NEAR THE BUILDING ACCORDING TO BROKEN ARROW ORDINANCE NO. 1777, SECTION 24-100, ADOPTED MAY 17, 1993. * REQUIRES BACKFLOW PREVENTER VALVE

