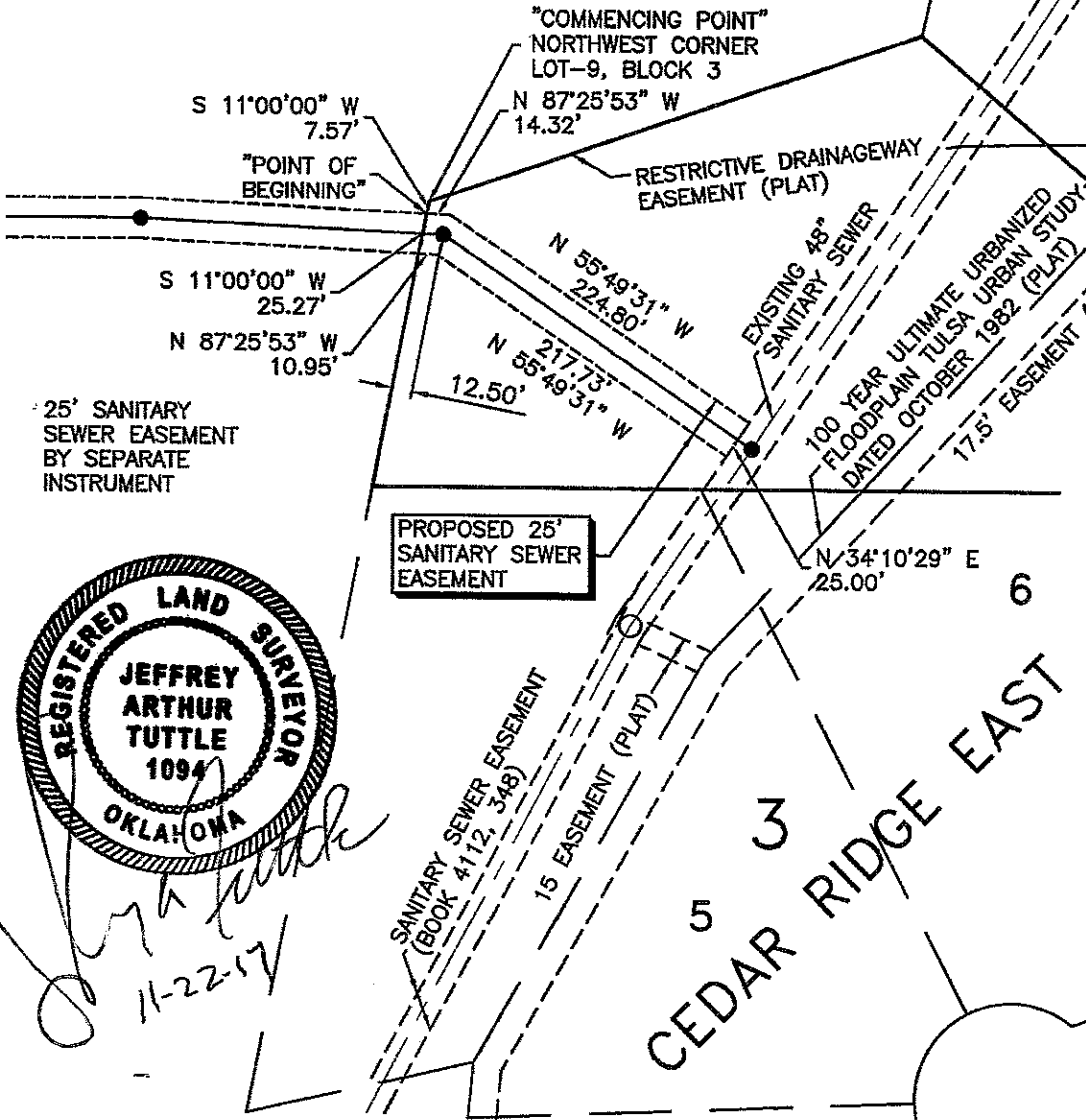


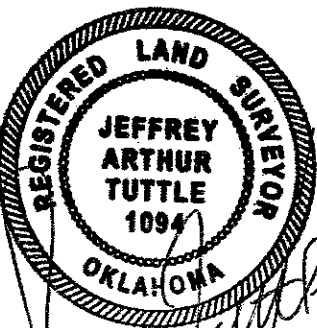
TRAVERSE CLOSURE REPORT



ASTER AVENUE

25' SANITARY SEWER EASEMENT BY SEPARATE INSTRUMENT

PROPOSED 25' SANITARY SEWER EASEMENT



Jeffrey A. Tuttle
11-22-17

CEDAR RIDGE EAST, Lot 9, Block 3
25 foot Sanitary Sewer Easement Description
Traverse Closure Report Wed Nov 22 10:36:09 2017

Northing	Easting	Bearing	Distance
11023.365	13739.064	S 11°00'00" W	25.270
10998.559	13734.242	S 87°25'53" E	10.950
10998.068	13745.181	S 55°49'31" E	217.730
10875.765	13925.315	N 34°10'29" E	25.000
10896.449	13939.358	N 55°49'31" W	224.800
11022.723	13753.375	N 87°25'53" W	14.320
11023.365	13739.069		

Closure Error Distance > 0.00539 Error Bearing > N 88°37'52" W
Closure Precision > 1 in 96069.9 Total Distance > 518.070
Traverse Closure Area: 5847.53 sq ft, 0.134 acres



TUTTLE & ASSOCIATES, INC.

9718 East 55th Place South
Tulsa, Oklahoma 74146
Phone: (918) 663-5567

Date: 11/22/17
Drawn: RWT
Checked: JAT
Job Number: 5038
Sheet 1 of 1