

**Public Contract
Application for
Contractual Changes
Contract Change Order # 1**

Project Name: Oak Crest Addition Sanitary Sewer And Water Line Improvements Project Number: S.23070
PO Number: 22501661 Date of Application: Thursday, December 11, 2025
Contractor: Timber Wolf Excavating, LLC Submitted By: Edmund Barlow, Project Mgr.

Summary of Change in Scope of Work

The following scope of work consisting of work location, work description, established quantities, and timeline for completion has been reviewed and agreed upon by the contractor, the origin funding department, and the Engineering and Construction Department.

Change of Work Items Included in this Change Order:

- 1) Install 240 LF of 12" HDPE sewer pipe on line 2, including up size casing pipe for creek crossing.
- 2) Install additional 4' drop manhole on line 2 at Sta 74+00. Approximate depth 8ft.
- 3)
- 4)
- 5)

Change in Contractual Project Time:

- 1) 15 days
- 2)

Plan Sheets or Additional Documents Attached: ☐ Yes ☒ No ☐ Other: _____

Work Order Quantities

Item#	(Spec)	Item Description	Units	Price	Quantity	Total Amount
1		12" HDPE	Ea	\$ 219.91	240	\$ 52,778.40
2		4' Manhole	Ea	\$ 8,450.00	1	\$ 8,450.00
3			LS			\$ -
4						\$ -
5						\$ -

Total Change Cost: \$ 61,228.40

Summary of Project Costs

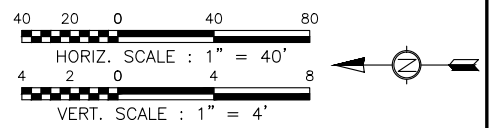
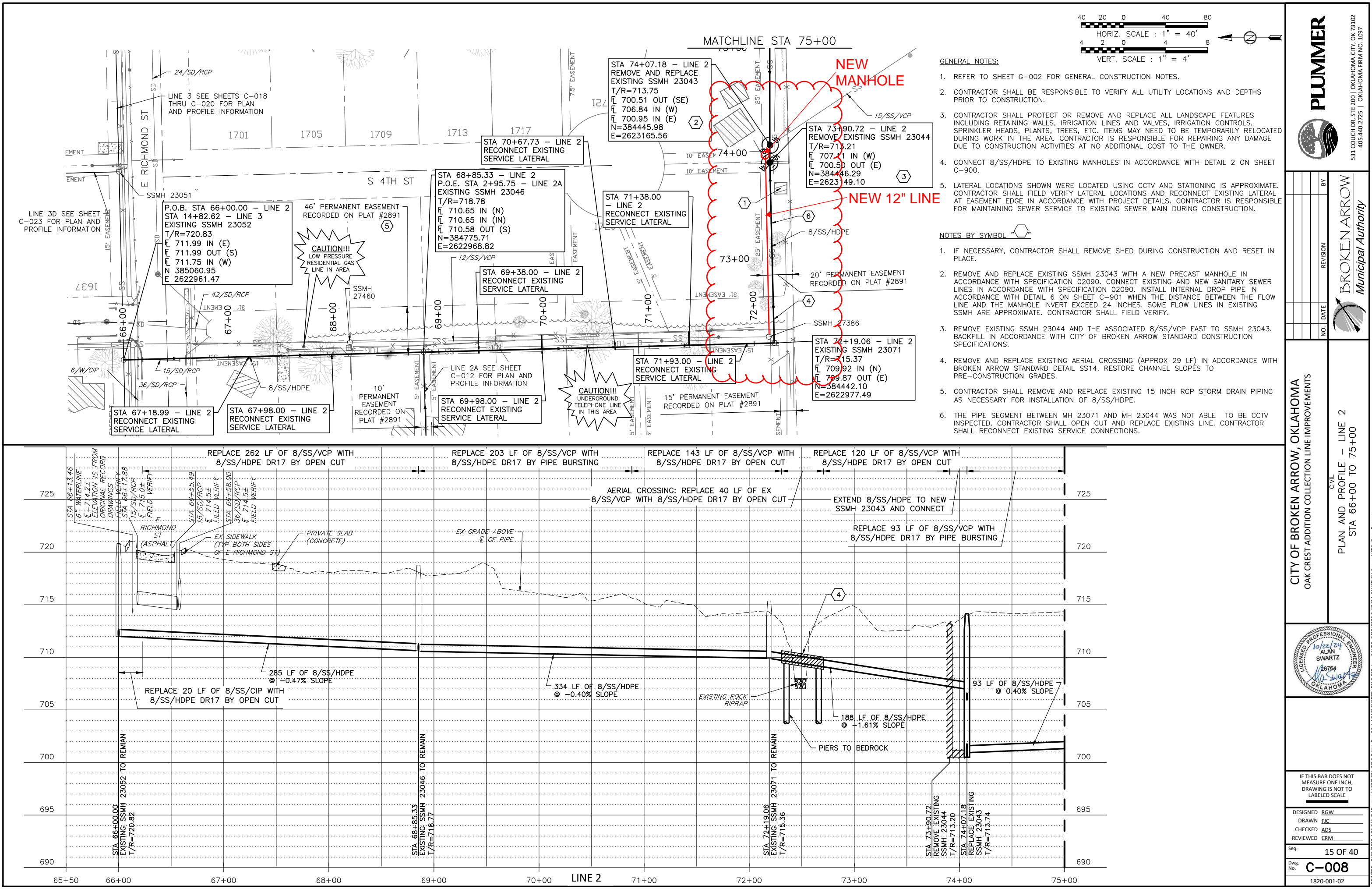
Total Previous Change Orders:	\$ -	Original Contract Amount:	\$ 6,860,730.00
Current Change Order:	\$ 61,228.40	Amended Contract Amount:	\$ 6,921,958.40
Total Cost of Change Orders:	\$ 61,228.40	Percent Change in Contract:	0.89%
Total Cost Applicable to CBA:	\$ 52,778.40	Percent Change Applicable to CBA:	0.77%

Change Order Authorization

Change Order # <u>1</u> in the sum of: \$ <u>61,228.40</u>	has been reviewed by all parties and is recommended for approval by:		
Contractor Submitting Change Order:	<u>Edmund Barlow, PM</u> Name	<u>Edmund Barlow</u> Signature	<u>12/11/2025</u> Date
Construction Division Manager:	<u>Nathanael T. Kohl, PE</u> Name	<u>Nathanael Kohl</u> Signature	<u>12/12/2025</u> Date
Director of Engineering & Construction:	<u>Charlie Bright, PE</u> Name	<u>Charlie Bright</u> Signature	<u>12/12/2025</u> Date
Assistant City Manager - Operations:	<u>Kenneth D Schwab, PE</u> Name	<u>Kenneth Schwab</u> Signature	<u>12/13/2025</u> Date
City Manager:	<u>Michael Spurgeon</u> Name	<u>Michael Spurgeon</u> Signature	<u> </u> Date

This Change is Executed Through:

- ☐ This change to the contract documents is authorized by the City Manager's authority in accordance with the applicable state statutes and COBA Code of Ordinances.
or
☐ This change to the contract documents was approved at the City Council/BAMA meeting held on : _____



- GENERAL NOTES:**
- REFER TO SHEET G-002 FOR GENERAL CONSTRUCTION NOTES.
 - CONTRACTOR SHALL BE RESPONSIBLE TO VERIFY ALL UTILITY LOCATIONS AND DEPTHS PRIOR TO CONSTRUCTION.
 - CONTRACTOR SHALL PROTECT OR REMOVE AND REPLACE ALL LANDSCAPE FEATURES INCLUDING RETAINING WALLS, IRRIGATION LINES AND VALVES, IRRIGATION CONTROLS, SPRINKLER HEADS, PLANTS, TREES, ETC. ITEMS MAY NEED TO BE TEMPORARILY RELOCATED DURING WORK IN THE AREA. CONTRACTOR IS RESPONSIBLE FOR REPAIRING ANY DAMAGE DUE TO CONSTRUCTION ACTIVITIES AT NO ADDITIONAL COST TO THE OWNER.
 - CONNECT 8/SS/HDPE TO EXISTING MANHOLES IN ACCORDANCE WITH DETAIL 2 ON SHEET C-900.
 - LATERAL LOCATIONS SHOWN WERE LOCATED USING CCTV AND STATIONING IS APPROXIMATE. CONTRACTOR SHALL FIELD VERIFY LATERAL LOCATIONS AND RECONNECT EXISTING LATERAL AT EASEMENT EDGE IN ACCORDANCE WITH PROJECT DETAILS. CONTRACTOR IS RESPONSIBLE FOR MAINTAINING SEWER SERVICE TO EXISTING SEWER MAIN DURING CONSTRUCTION.

- NOTES BY SYMBOL**
- IF NECESSARY, CONTRACTOR SHALL REMOVE SHED DURING CONSTRUCTION AND RESET IN PLACE.
 - REMOVE AND REPLACE EXISTING SSMH 23043 WITH A NEW PRECAST MANHOLE IN ACCORDANCE WITH SPECIFICATION 02090. CONNECT EXISTING AND NEW SANITARY SEWER LINES IN ACCORDANCE WITH SPECIFICATION 02090. INSTALL INTERNAL DROP PIPE IN ACCORDANCE WITH DETAIL 6 ON SHEET C-901 WHEN THE DISTANCE BETWEEN THE FLOW LINE AND THE MANHOLE INVERT EXCEED 24 INCHES. SOME FLOW LINES IN EXISTING SSMH ARE APPROXIMATE. CONTRACTOR SHALL FIELD VERIFY.
 - REMOVE EXISTING SSMH 23044 AND THE ASSOCIATED 8/SS/VCP EAST TO SSMH 23043. BACKFILL IN ACCORDANCE WITH CITY OF BROKEN ARROW STANDARD CONSTRUCTION SPECIFICATIONS.
 - REMOVE AND REPLACE EXISTING AERIAL CROSSING (APPROX 29 LF) IN ACCORDANCE WITH BROKEN ARROW STANDARD DETAIL SS14. RESTORE CHANNEL SLOPES TO PRE-CONSTRUCTION GRADES.
 - CONTRACTOR SHALL REMOVE AND REPLACE EXISTING 15 INCH RCP STORM DRAIN PIPING AS NECESSARY FOR INSTALLATION OF 8/SS/HDPE.
 - THE PIPE SEGMENT BETWEEN MH 23071 AND MH 23044 WAS NOT ABLE TO BE CCTV INSPECTED. CONTRACTOR SHALL OPEN CUT AND REPLACE EXISTING LINE. CONTRACTOR SHALL RECONNECT EXISTING SERVICE CONNECTIONS.

PLUMMER

531 COUCH DR, STE 200 | OKLAHOMA CITY, OK 73102
405.440.2725 | OKLAHOMA FIRM NO. 1097

NO.	DATE	REVISION	BY

CITY OF BROKEN ARROW, OKLAHOMA

OAK CREST ADDITION COLLECTION LINE IMPROVEMENTS

CIVIL

PLAN AND PROFILE - LINE 2
STA 66+00 TO 75+00

DESIGNED: RGW

DRAWN: FJC

CHECKED: ADS

REVIEWED: CRM

Seq. 15 OF 40

Dwg. No. **C-008**

1820-001-02

IF THIS BAR DOES NOT MEASURE ONE INCH, DRAWING IS NOT TO LABELED SCALE

28764

10/22/24

ALAN SWARTZ

OKLAHOMA