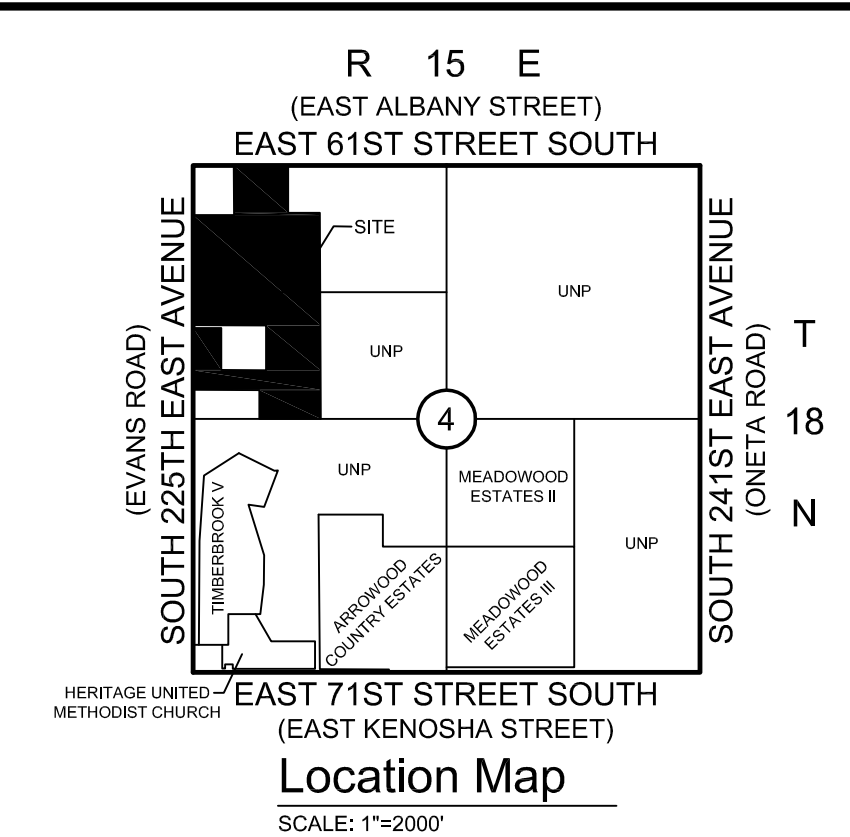
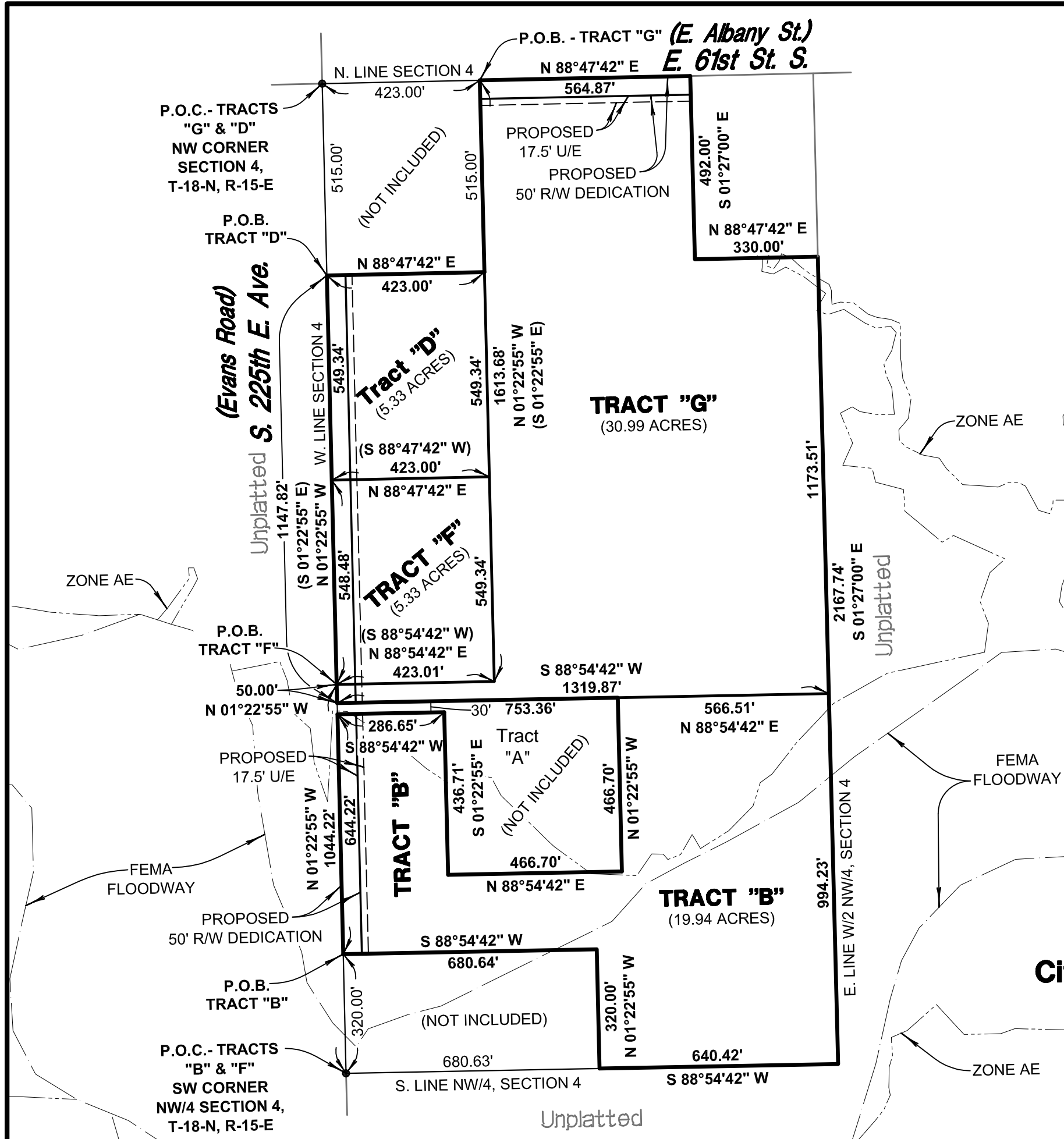
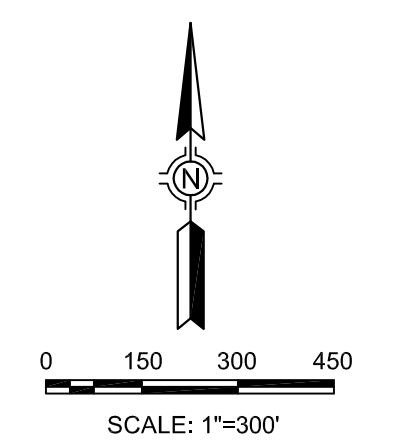


K:\13200.02\Exhibits\LOT-SPLIT-EXH.dwg SHEET 1 Feb 15, 2016 - 10:09:17am SISEMORE WEISZ & ASSOCIATES, INC., 2016



Legend
U/E = UTILITY EASEMENT
R/W = RIGHT-OF-WAY
P.O.B. = POINT OF BEGINNING
P.O.C. = POINT OF COMMENCEMENT

Note:
FLOOD LINES AS DIGITIZED FROM FEMA FIRM
MAP PANEL NO. 40145C0105H (4-17-2012)



Lot Split Exhibit
of
Part of the W/2 of the NW/4 of
Section 4, T-18-N, R-15-E
City of Broken Arrow, Wagoner County, Oklahoma

Sisemore Weisz & Associates, Inc. 6111 EAST 32nd PLACE TULSA, OKLAHOMA 74135 C.A. NO. 2421			PHONE: (918) 665-3800 FAX: (918) 665-8668 EXP. DATE 6/30/17		
FILE:	1815.0440	SURVEY BY:		DATE:	2/9/16
ORDER:	13200.02	DRAWN BY:	LAD	SCALE:	1"=300'
BOOK:		CHECKED BY:	MC	SHEET	1 OF 1