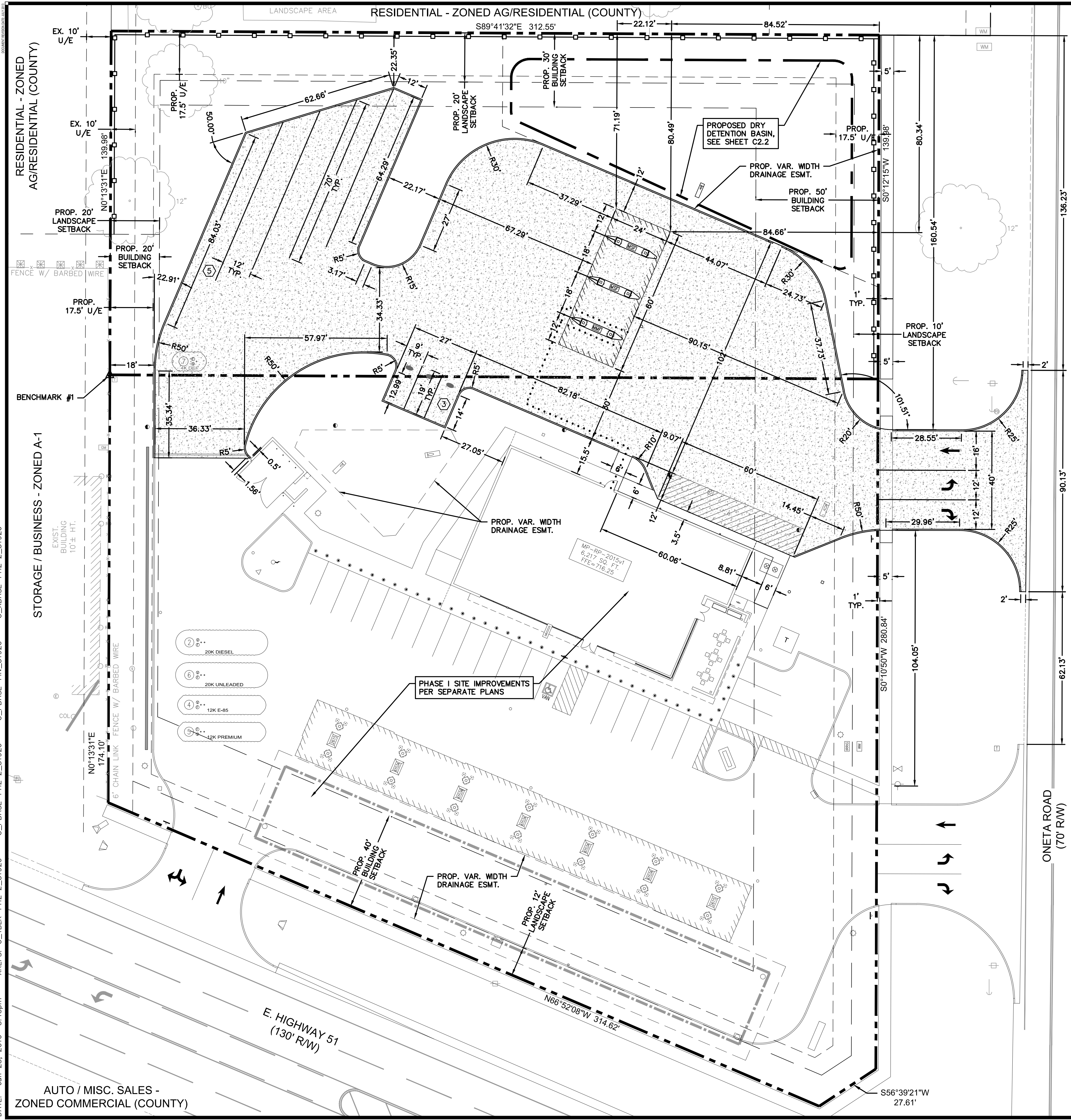


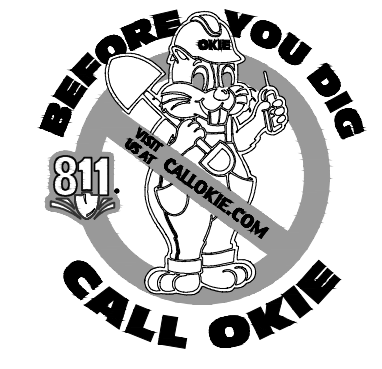
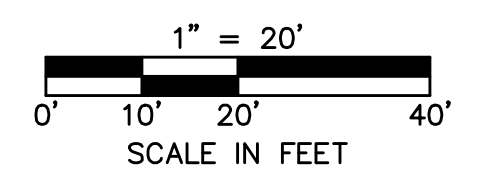
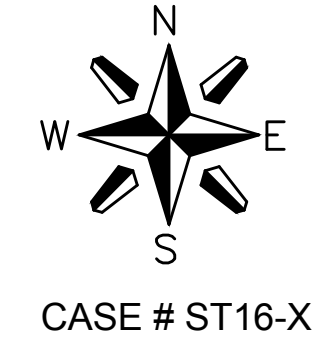
DWG: F:\PROJECTS\015-1926\40-Design\AutoCAD\Final Plans\Sheets PHZ 2\C_SIT_51926.dwg
 DATE: Jun 23, 2016 3:15pm
 USER: mchodwick
 C:\PBASE-PHZ_2_51926
 C:\PBASE-PHZ_2_51926
 C:\PBASE-PHZ_2_51926



BENCHMARKS:
 BENCHMARK #1
 3/8" IRON PIN WITH CAP STAMPED
 'SACK' FOUND AT NORTHWEST
 CORNER OF LOT 1 BLOCK 1, BOL
 ADDITION
 ELEV.=712.02 (NAVD 1988)
 BENCHMARK #2 (TEMPORARY)
 SQUARE CUT IN SOUTH CURB LINE
 ADJACENT TO SIDEWALK OF NORTH
 DRIVE ENTRANCE INTO EXIST. KUM
 & GO APPROX. 210 FEET NORTH OF
 THE HIGHWAY 51 & ONETA RD.
 INTERSECTION
 ELEV.=713.55 (NAVD 1988)

NOTE:
 PROPERTY BOUNDARY LABELS
 AND INFORMATION IS SHOWN
 FOR REFERENCE ONLY

- LEGEND**
- PROPOSED BOUNDARY
 - - - SETBACK LINE
 - - - EXISTING EASEMENT LINE
 - - - PROPOSED DRY DETENTION BASIN
 - - - LIMITS OF UNDERGROUND DETENTION SYSTEM
 - - - PROPOSED INTEGRAL CONCRETE CURB
 - - - PROPOSED BUILDING ROUTE
 - - - ADA ACCESSIBLE ROUTE
 - - - PROPOSED BUILDING
 - - - PROPOSED HEAVY DUTY CONCRETE PAVEMENT
 - - - PROPOSED BOLLARD
 - - - PROPOSED SANITARY SEWER CLEANOUT
 - - - PROPOSED SAMPLING MANHOLE
 - - - PROPOSED GREASE INTERCEPTOR
 - - - PROPOSED WATER METER
 - - - PROPOSED IRRIGATION METER
 - - - PROPOSED PUBLIC FIRE HYDRANT
 - - - PROPOSED STORM SEWER CLEANOUT
 - - - PROPOSED FLARED END SECTION
 - - - PROPOSED STORM SEWER STRUCTURE
 - - - PROPOSED UNDERGROUND DETENTION INSPECTION PORT
 - - - PROPOSED STORM SEWER STRUCTURE
 - - - PROPOSED TELEPHONE PEDESTAL
 - - - PROPOSED TRANSFORMER
 - - - PARKING STALL COUNT PER BAY
 - - - BENCHMARK
 - - - EXIST. SIGN
 - - - EXIST. MAILBOX
 - - - EXIST. DECIDUOUS TREE
 - - - EXIST. TELEPHONE PEDESTAL
 - - - EXIST. GAS METER
 - - - EXIST. GUY WIRE
 - - - EXIST. POWER POLE
 - - - EXIST. SANITARY SEWER LAMPHOLE
 - - - EXIST. SANITARY SEWER MANHOLE
 - - - EXIST. SEWER CLEANOUT
 - - - EXIST. ROOF DRAIN
 - - - EXIST. FIBER OPTIC POST
 - - - EXIST. ELECTRIC PEDESTAL
 - - - EXIST. TRANSFORMER
 - - - EXIST. TRAFFIC SIGNAL MANHOLE
 - - - EXIST. TRAFFIC SIGNAL WITH ARM
 - - - EXIST. FIRE HYDRANT
 - - - EXIST. WATER METER
 - - - EXIST. WATER VALVE
 - - - EXIST. EDGE OF ASPHALT
 - - - EXIST. CONCRETE CURB
 - - - EXIST. EDGE OF GRAVEL
 - - - EXIST. CHAINLINK FENCE W/ BARBED WIRE
 - - - EXIST. WOOD FENCE
 - - - EXIST. CHAINLINK FENCE
 - - - EXIST. SPLIT RAIL FENCE
 - - - PROPOSED WOOD FENCE



OLSSON ASSOCIATES
 Olsson Associates, Inc. 1000 Lakeside Drive, Suite 100, Des Moines, IA 50319
 Phone: 515-226-0128
 Fax: 515-223-9873
 www.olssonassociates.com



6400 Westown Parkway
 West Des Moines, Iowa
 50266
 P: 515-226-0128
 F: 515-223-9873

#837 PHASE II - BROKEN ARROW, OK
 24055 E. HIGHWAY 51
SITE PLAN

KG PROJECT TEAM:
 RDR: KXW
 SDM: RRF
 CPM: SDN

REVISION DESCRIPTION	DATE	BY	CHKD

DATE: XX-XX-16
 SHEET NUMBER: C1.1
 3 OF XX

AUTO / MISC. SALES -
 ZONED COMMERCIAL (COUNTY)

CASE # ST16-XXX