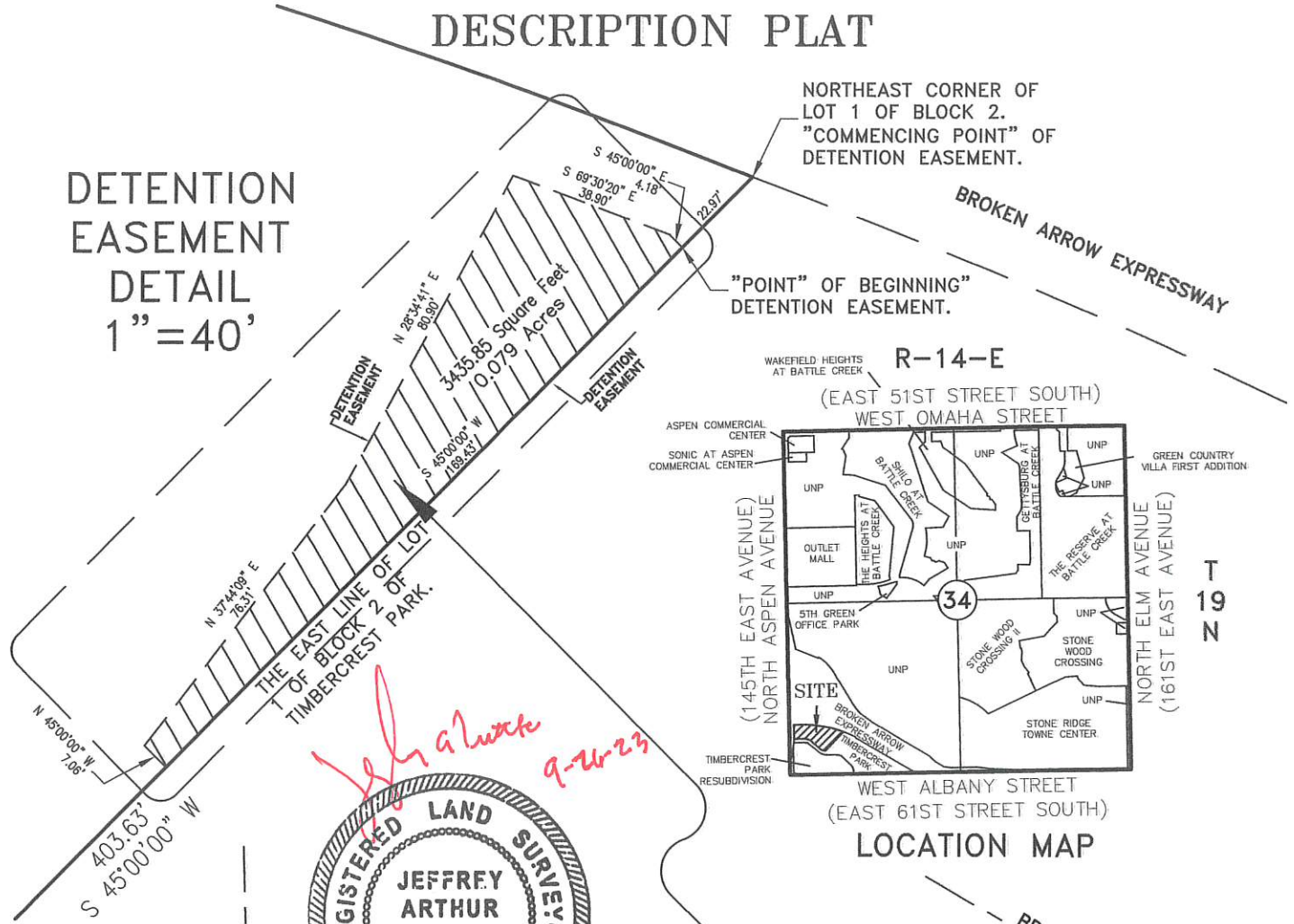


# DESCRIPTION PLAT

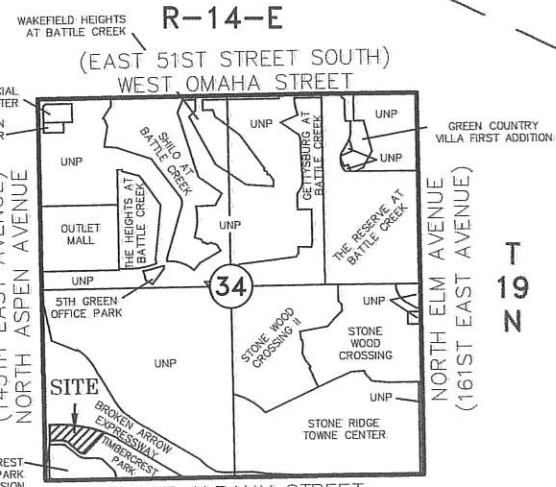
DETENTION EASEMENT  
DETAIL  
1" = 40'

NORTHEAST CORNER OF  
LOT 1 OF BLOCK 2.  
"COMMENCING POINT"  
OF  
DETENTION EASEMENT.

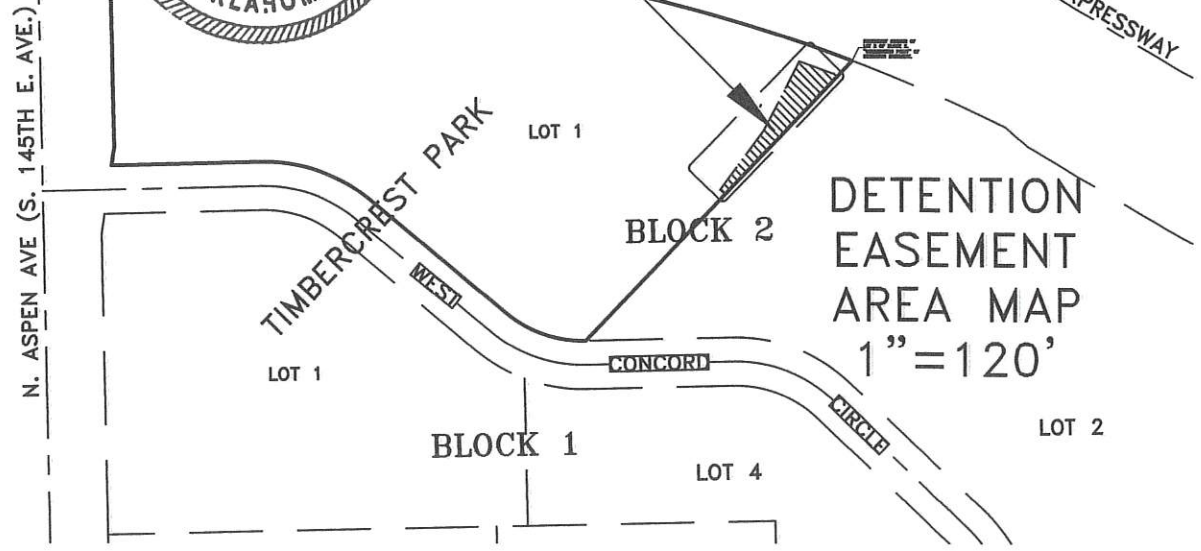
"POINT" OF BEGINNING"  
DETENTION EASEMENT.



*Jeff Tuttle*  
*9-26-23*



LOCATION MAP



DETENTION EASEMENT  
AREA MAP  
1" = 120'



**TUTTLE & ASSOCIATES, INC.**  
P.O. BOX 47313  
Tulsa, Oklahoma 74147-1313  
Phone: (918) 663-5567

Date: 09/18/23
Drawn: RWT
Checked: JAT
Job Number: 5106
Sheet 1 of 1

**ACTION POWER SPORTS, Inc.**  
**Detention Easement Description:**

A Detention Easement being a part of Lot 1 of Block 2 of TIMBERCREST PARK, an addition to the City of Broken Arrow, Tulsa County, Oklahoma according to Plat Number 4301 filed in the records of the Tulsa County Clerk's office. Said part of Lot 1 of Block 2 being more particularly described as follows:

COMMENCING at the Northeast corner of said Lot 1 of Block 2 of TIMBERCREST PARK, an addition to the City of Broken Arrow, Tulsa County, Oklahoma according to Plat Number 4301 filed in the records of the Tulsa County Clerk's office; THENCE S 45°00'00" W along the Easterly line of said Lot 1 of Block 2 for a distance of 22.97 feet to the POINT OF BEGINNING; THENCE continuing S 45°00'00" W along said Easterly line for a distance of 169.43 feet; THENCE N 45°00'00" W FOR A DISTANCE OF 7.06 feet; THENCE N 37°44'09" E for a distance of 76.31 feet; THENCE N 28°34'41" E for a distance of 80.90 feet; THENCE S 69°30'20" E for a distance of 38.90 feet; THENCE S 45°00'00" E for a distance of 4.18 feet to the POINT OF BEGINNING. Basis of Bearings is the record bearing of S 45°00'00" W along the Easterly line of the aforementioned Lot 1 of Block 2 of TIMBERCREST PARK, an addition to the City of Broken Arrow, Tulsa County, Oklahoma according to Plat Number 4301 filed in the records of the Tulsa County Clerk's office.

Said tract contains 3435.85 square feet or 0.079 acres more or less.

