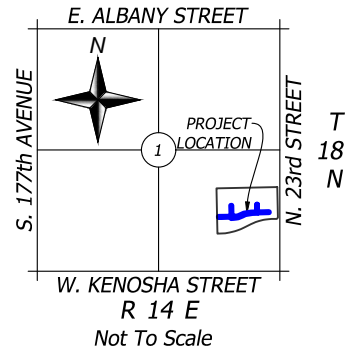


EASEMENT#2
LEGAL DESCRIPTIONS
 Part of Lot 1 of Block 3
 AMENDED PLAT OF THE PARK AT ADAMS CREEK
 PHASE 1
 CITY OF BROKEN ARROW, TULSA COUNTY
 STATE OF OKLAHOMA



Line Table		
Line #	Direction	Length
L37	N 88°47'01" E	261.20'
L38	N 01°12'59" W	223.60'
L39	N 88°47'01" E	15.00'
L40	S 01°12'59" E	223.60'
L41	N 88°47'01" E	116.06'
L42	N 66°13'17" E	142.82'
L43	N 80°53'02" E	153.58'
L44	N 88°47'01" E	117.23'
L45	N 01°12'59" W	160.12'

Line Table		
Line #	Direction	Length
L46	N 88°47'01" E	15.00'
L47	S 01°12'59" E	160.12'
L48	N 88°47'01" E	111.58'
L49	N 88°47'01" E	53.67'
L50	N 88°47'01" E	77.45'
L51	S 01°12'59" E	15.00'
L52	S 88°47'01" W	242.69'
L53	S 01°12'59" E	7.50'

Line Table		
Line #	Direction	Length
L54	S 88°47'01" W	105.21'
L55	S 80°53'02" W	145.30'
L57	S 62°41'47" W	61.02'
L59	S 88°47'01" W	33.17'
L60	N 01°12'59" W	28.50'
L61	S 88°47'01" W	261.20'
L62	N 01°12'59" W	15.00'

Curve Table					
Curve #	Length	Radius	Delta	ChB	ChL
C1	6.34'	321.00'	001.1320	S 63°15'44" W	6.34'
C2	211.72'	465.00'	026.0873	S 75°44'24" W	209.89'

LEGAL DESCRIPTION

EASEMENT# 2

An Easement being at variable widths lying in Lot One (1), Block One (1) of AMENDED PLAT OF THE PARK AT ADAMS CREEK PHASE 1, an Addition to the City of Broken Arrow, Tulsa County, Oklahoma, being more particularly described as follows:

COMMENCING at the Northwest corner of said Lot One (1), Block Three (3); Thence S01°18'59"E along the West line of said Lot 1 a distance of 586.60 feet; Thence N88°47'01"E a distance of 30.00 feet to the POINT OF BEGINNING; Thence continuing N88°47'01"E a distance of 261.20 feet; Thence N01°12'59"W a distance of 223.60 feet; Thence N88°47'01"E a distance of 15.00 feet; Thence S01°12'59"E a distance of 223.60 feet; Thence N88°47'01"E a distance of 116.06 feet; Thence N66°13'17"E a distance of 142.82 feet; Thence N80°53'02"E a distance of 153.58 feet; Thence N88°47'01"E a distance of 117.23 feet; Thence N01°12'59"W a distance of 160.12 feet; Thence N88°47'01"E a distance of 15.00 feet; Thence S01°12'59"E a distance of 160.12 feet; Thence N88°47'01"E a distance of 111.58 feet; Thence N88°47'01"E a distance of 53.67 feet; Thence N88°47'01"E a distance of 77.45 feet; Thence S01°12'59"E a distance of 15.00 feet; Thence S88°47'01"W a distance of 242.69 feet; Thence S01°12'59"E a distance of 7.50 feet; Thence S88°47'01"W a distance of 105.21 feet; Thence S80°53'02"W a distance of 145.30 feet; Thence along a curve to the left having a radius of 321.00 feet and a chord bearing of S63°15'44"W and a chord length of 6.34 feet for an arc length of 6.34 feet; Thence S62°41'47"W a distance of 61.02 feet; Thence along a curve to the right having a radius of 465.00 feet and a chord bearing of S75°44'24"W and a chord length of 209.89 feet for an arc length of 211.72 feet; Thence S88°47'01"W a distance of 33.17 feet; Thence N01°12'59"W a distance of 28.50 feet; Thence S88°47'01"W a distance of 261.20 feet; Thence N01°12'59"W a distance of 15.00 feet; to the POINT OF BEGINNING;

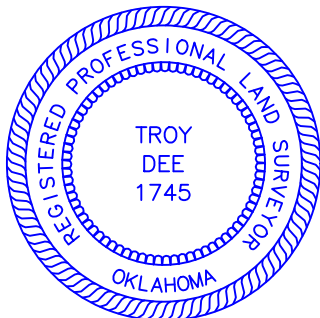
Containing 31,085.22 Sq. Ft. or 0.713 Acres, more or less.

SURVEYOR' STATEMENT

The basis of bearings for the legal descriptions are based on Oklahoma State Plane Coordinate System (South Zone) using S01°19'04"E as the East line of Lot One (1), Block Three (3) of AMENDED PLAT OF THE PARK AT ADAMS CREEK PHASE 1.

SURVEYOR' CERTIFICATION

I, TROY DEE, OF GOLDEN LAND SURVEYING, CERTIFY THAT THE ATTACHED LEGAL DESCRIPTION CLOSES IN ACCORD WITH EXISTING RECORDS, IS A TRUE REPRESENTATION OF THE EASEMENT AS DESCRIBED, AND MEETS THE MINIMUM TECHNICAL STANDARDS FOR LAND SURVEYING OF THE STATE OF OKLAHOMA.



Troy Dee
 Troy Dee, PLS #1745
 March 5, 2025

Prepared By
GOLDEN
LAND SURVEYING

4131 N.W. 122nd St., Suite 100, Oklahoma City, Oklahoma 73120
 C.A.# 7263 / Exp. Date =6/30/2026

Telephone: (405) 802-7883 Email: troy@goldenls.com

Drafted by: JP GLS Job No.: 222048
 Plot Date: March 5, 2025

Sheet 1 Of 3

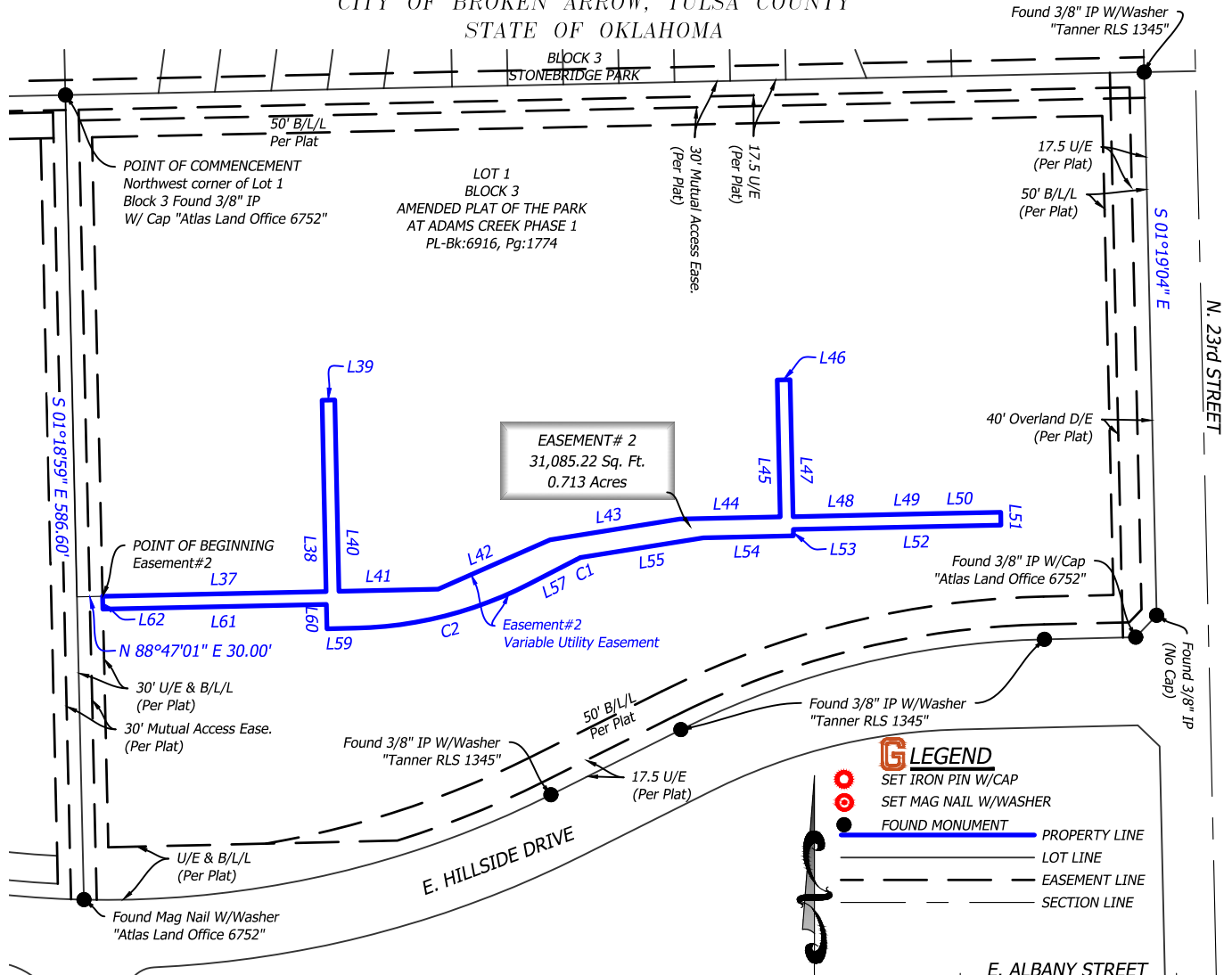
EASEMENT#2 EXHIBIT

Part of Lot 1 of Block 3

AMENDED PLAT OF THE PARK AT ADAMS CREEK PHASE 1

CITY OF BROKEN ARROW, TULSA COUNTY

STATE OF OKLAHOMA

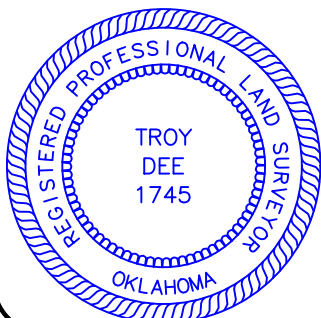


G SURVEYOR' STATEMENT

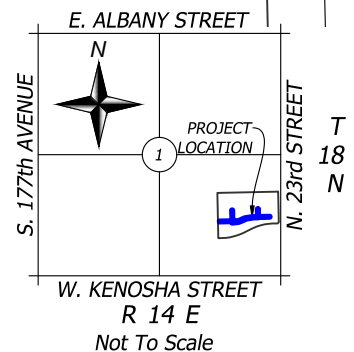
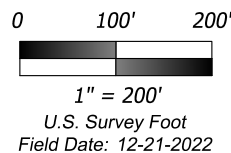
The basis of bearings for the legal descriptions are based on Oklahoma State Plane Coordinate System (South Zone) using S01°19'04"E as the East line of Lot One (1), Block Three (3) of AMENDED PLAT OF THE PARK AT ADAMS CREEK PHASE 1.

G SURVEYOR' CERTIFICATION

I, TROY DEE, OF GOLDEN LAND SURVEYING, CERTIFY THAT THE ATTACHED LEGAL DESCRIPTION CLOSSES IN ACCORD WITH EXISTING RECORDS, IS A TRUE REPRESENTATION OF THE EASEMENT AS DESCRIBED, AND MEETS THE MINIMUM TECHNICAL STANDARDS FOR LAND SURVEYING OF THE STATE OF OKLAHOMA.



Troy Dee
Troy Dee, PLS #1745
March 5, 2025



Prepared By
GOLDEN
LAND SURVEYING

4131 N.W. 122nd St., Suite 100, Oklahoma City, Oklahoma 73120
C.A.# 7263 / Exp. Date =6/30/2026

Telephone: (405) 802-7883 Email: troy@goldenls.com

Drafted by: JP GLS Job No.: 222048
Plot Date: March 5, 2025

Sheet 2 Of 3