



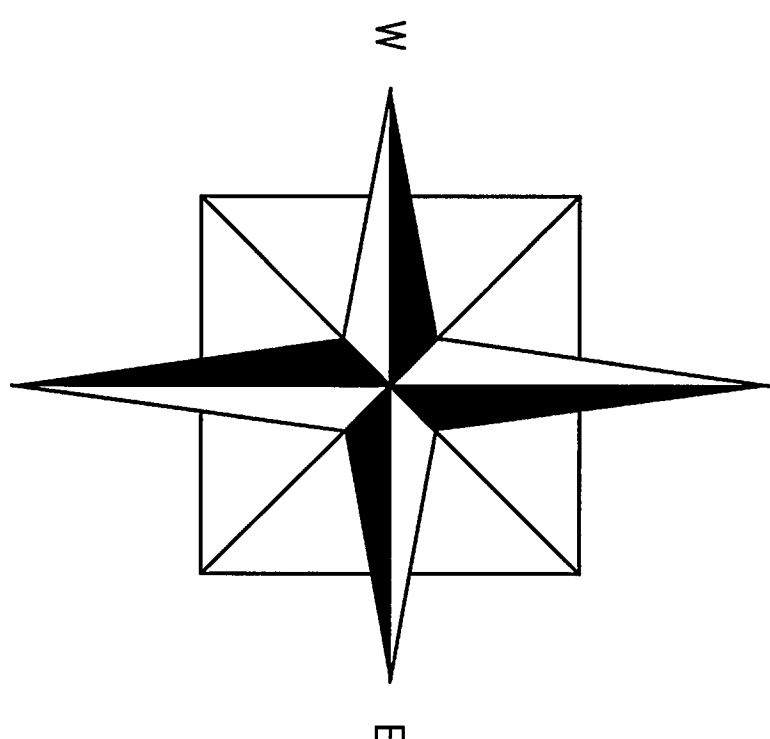
Tulsa County Clerk - PAT KEY
 Doc # 6874 Page(s) 2
 Recorded 12/05/2014 at 11:58 AM
 Receipt # 807438 Fee \$15.00

OWNER/DEVELOPER
SSL LAND I, LLC
 704 S. 11th STREET
 BROKEN ARROW, OK 74012
 PHONE: (918) 983-6066

ENGINEER/SURVEYOR
TUTTLE & ASSOCIATES, INC.
 9714 E. 55TH PL.
 TULSA, OKLAHOMA 74146
 PHONE: (918) 663-5567
 CERTIFICATE OF AUTHORITY CA 465
 EXPIRATION 6-30-15

SHADY BROOKE

A PART OF THE NE/4 OF SECTION 15, TOWNSHIP 18 NORTH, RANGE 14 EAST, CITY OF BROKEN ARROW, TULSA COUNTY, OKLAHOMA
 P.U.D. NO. 28J



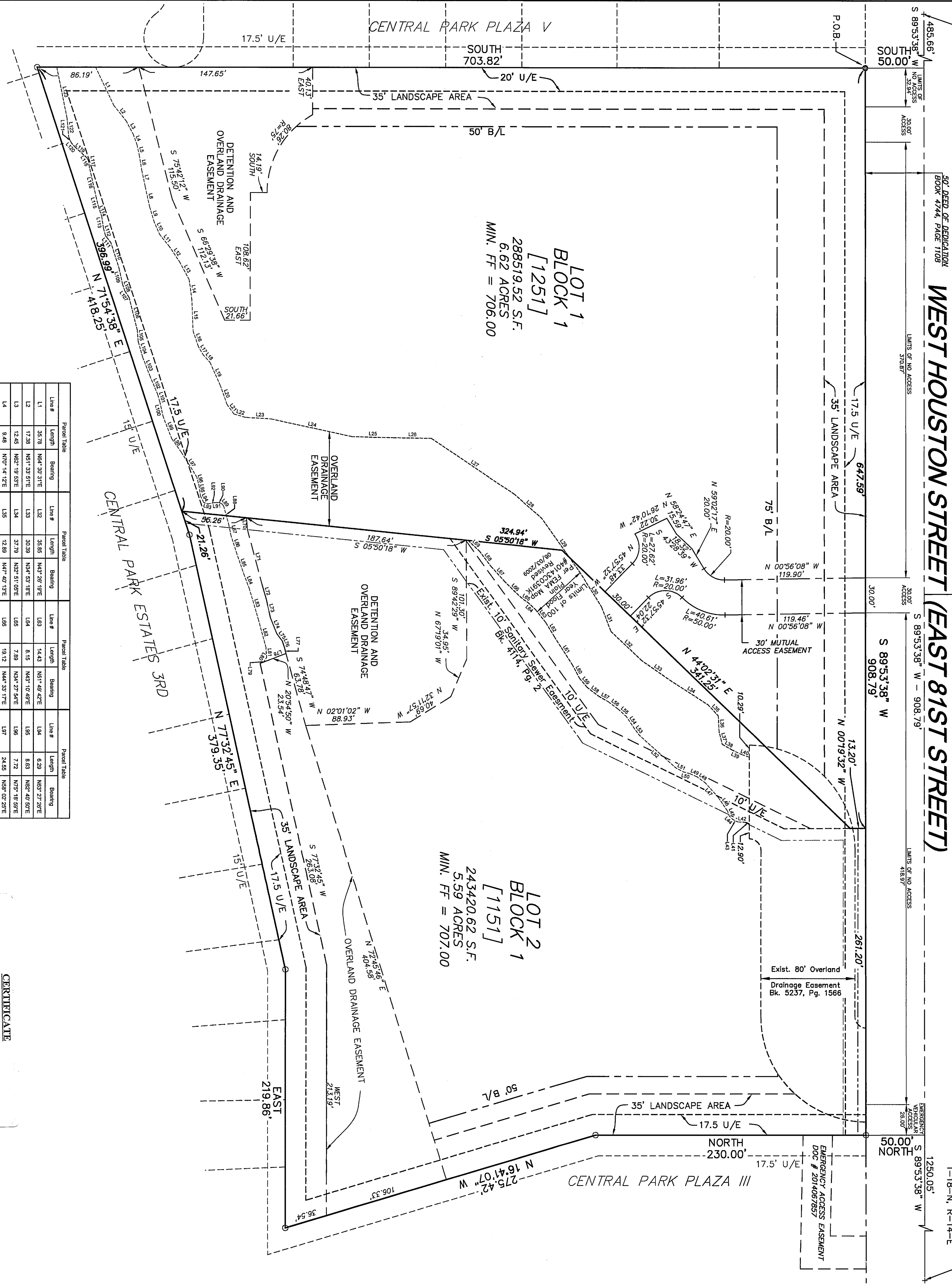
LEGAL DESCRIPTION:
 PART OF THE NE/4 OF SECTION 15, TOWNSHIP 18 NORTH, RANGE 14 EAST OF THE MIDLAND BASE AND MERIDIAN, TULSA COUNTY, OKLAHOMA, BEING MORE PARTICULARLY DESCRIBED AS FOLLOWS: TO-WIT:
 COMMENCING AT THE NORTHEAST CORNER OF SAID SECTION 15;
 THENCE SOUTH 89°53'38" WEST ALONG THE NORTH LINE OF SAID SECTION 15, A DISTANCE OF 2158.84 FEET TO A POINT;
 THENCE SOUTH 50.00 FEET TO THE POINT OF BEGINNING;
 THENCE SOUTH A DISTANCE OF 703.82 FEET TO A POINT ON THE NORTH LINE OF CENTRAL PARK ESTATES THIRD ADDITION;
 THENCE NORTH 2°41'58" EAST ALONG SAID NORTH LINE A DISTANCE OF 418.25 FEET TO A POINT;
 THENCE CONTINUING ALONG SAID LINE NORTH 77°32'45" EAST A DISTANCE OF 379.35 FEET TO A POINT;
 THENCE EAST ALONG SAID NORTH LINE A DISTANCE OF 219.86 FEET TO A POINT;
 THENCE NORTH 16°41'07" WEST A DISTANCE OF 275.42 FEET TO A POINT;
 THENCE NORTH 89°53'38" WEST A DISTANCE OF 230.00 FEET TO A POINT;
 THENCE SOUTH 89°53'38" WEST PARALLEL TO THE NORTH LINE OF SAID SECTION A DISTANCE OF 908.79 FEET TO THE POINT OF BEGINNING.

NW CORNER OF THE NE 1/4 OF SEC. 15, T-18-N, R-14-E IRON PIN IN VALVE BOX 707.45 (NAVD) BENCH MARK

WEST HOUSTON STREET (EAST 81ST STREET)

HICKORY PLACE

P.O.C. NE CORNER OF THE NE 1/4 OF SEC. 15, T-18-N, R-14-E



Point	Length	Bearing	Point	Length	Bearing	Point	Length	Bearing	Point	Length	Bearing
L1	35.78	N42°30'21"E	L61	38.46	N42°30'19"E	L111	14.43	N17°42'42"E	L161	8.20	N40°27'28"E
L2	17.29	N47°33'51"E	L62	33.33	N45°35'19"E	L112	8.10	N45°10'49"E	L162	8.83	N42°40'28"E
L3	12.45	N62°19'53"E	L63	32.93	N42°51'05"E	L113	8.29	N46°27'54"E	L163	7.72	N47°19'38"E
L4	9.48	N47°14'22"E	L64	12.89	N47°40'13"E	L114	19.13	N44°35'17"E	L164	24.85	N48°02'28"E
L5	9.48	N47°14'22"E	L65	11.29	N47°37'57"E	L115	15.84	N42°52'29"E	L165	14.66	N48°02'28"E
L6	12.16	N62°38'09"E	L66	9.80	N40°01'19"E	L116	13.81	N42°27'37"E	L166	12.29	N47°24'54"E
L7	14.47	N47°00'19"E	L67	8.40	N42°50'47"E	L117	10.31	N42°20'02"W	L167	7.28	N47°24'54"E
L8	17.81	N17°31'01"E	L68	7.28	N47°00'19"E	L118	4.67	N17°12'19"E	L168	16.81	N48°02'28"E
L9	13.16	N47°00'19"E	L69	1.34	N42°50'47"E	L119	13.20	N17°44'45"W	L169	16.72	N48°02'28"E
L10	11.34	N42°46'01"E	L70	2.78	N42°17'22"E	L120	15.70	N17°20'02"W	L170	14.72	N47°40'13"E
L11	13.83	N47°18'50"E	L71	7.28	N42°17'22"E	L121	14.72	N47°20'02"W	L171	14.72	N47°40'13"E
L12	15.34	N42°46'01"E	L72	4.77	N42°20'05"E	L122	14.44	N48°00'30"E	L172	9.87	N48°02'28"E
L13	17.29	N42°46'01"E	L73	7.72	N42°20'05"E	L123	17.72	N45°09'44"E	L173	20.81	N47°51'19"E
L14	18.66	N42°12'37"E	L74	4.47	N42°20'05"E	L124	6.51	N17°42'42"E	L174	14.82	N47°38'46"E
L15	27.17	N47°37'38"E	L75	14.47	N42°59'53"E	L125	8.53	N17°42'42"E	L175	6.63	N47°38'46"E
L16	15.46	N42°04'41"E	L76	18.59	N47°59'20"E	L126	23.14	N42°54'20"E	L176	14.28	N47°38'46"E
L17	8.80	N42°04'41"E	L77	18.59	N42°54'20"E	L127	1.93	N42°54'20"E	L177	22.72	N47°09'27"E
L18	8.80	N42°04'41"E	L78	7.28	N42°27'49"E	L128	3.89	N42°52'41"E	L178	5.22	N42°27'49"E
L19	20.24	N42°02'29"E	L79	5.43	N42°52'41"E	L129	8.80	N42°52'41"E	L179	12.22	N42°27'49"E
L20	17.13	N42°23'21"E	L80	7.28	N42°52'41"E	L130	24.86	N42°52'41"E	L180	8.80	N42°27'49"E
L21	17.13	N42°23'21"E	L81	4.10	N42°52'41"E	L131	12.80	N42°52'41"E	L181	12.80	N42°27'49"E
L22	10.07	N42°51'27"E	L82	4.10	N42°52'41"E	L132	27.21	N42°29'38"E	L182	8.38	N47°19'38"E
L23	18.89	N42°51'46"E	L83	11.44	N42°52'41"E	L133	13.13	N42°46'01"E	L183	9.73	N47°19'38"E
L24	7.06	N17°20'30"E	L84	9.43	N42°23'07"E	L134	16.80	N47°14'22"E	L184	3.85	N47°19'38"E
L25	26.83	N47°23'11"E	L85	9.43	N42°23'07"E	L135	10.82	N47°19'38"E	L185	1.80	N42°23'07"E
L26	31.84	N42°47'27"E	L86	10.82	N47°19'38"E	L136	9.43	N47°19'38"E	L186	1.80	N42°23'07"E
L27	46.75	N42°57'03"E	L87	6.53	N47°14'22"E	L137	16.83	N47°34'42"E	L187	4.50	N42°40'28"E
L28	30.33	N42°57'40"E	L88	13.19	N42°22'77"E	L138	2.80	N47°14'22"E	L188	5.14	N42°40'28"E
L29	86.01	N42°46'53"E	L89	10.12	N42°22'18"E	L139	2.80	N47°27'05"E	L189	5.14	N42°40'28"E
L30	53.01	N42°46'53"E	L90	12.80	N47°09'27"E	L140	5.13	N42°02'11"W	L190	16.82	N47°40'13"E
L31	28.40	N47°16'27"E	L91	28.40	N47°16'27"E	L141	5.13	N42°23'20"W	L191	16.82	N47°40'13"E
L32	22.42	N48°46'23"E	L92	14.01	N42°27'07"E	L142	4.10	N17°22'12"E	L192	14.01	N47°53'42"E

CERTIFICATE
 I hereby certify that all real estate taxes involved in this plat have been paid as reflected by the current tax rolls. Security as required has been provided in the amount of \$ 9,387.00 per trust receipt no. TAX ROLL 510 to be applied to 20 14 taxes. This certificate is NOT to be construed as payment of 20 14 taxes in full but is given in order that this plat may be filed on record. 20 14 taxes have been paid the amount of the security deposit.

Dated: 26th Nov 2014
 Tulsa County Treasurer
 By: *Wendy J. Thompson*
 Deputy

Approved Nov 4 2014 by the City Council of the City of Broken Arrow.
 Mayor: *Craig Thornmond*
 City Clerk: *Misty E. Bryce*



STATE OF OKLAHOMA
 COUNTY OF TULSA
 I, Pat Key, Tulsa County Clerk, in and for the County and State above do hereby certify that the foregoing is a true and correct copy of a plat filed in my office on the 11th day of November, 2014.

Dated this 11th day of November 2014
 Pat Key
 Tulsa County Clerk
 Deputy

LEGEND
 FOUND IRON PIN
 SET 3/8" IRON PIN
 EAST
 WEST
 SOUTH
 NORTH
 UTILITY EASEMENT
 DRAINAGE EASEMENT
 OVERLAND DRAINAGE EASEMENT
 BUILDING OF WAY
 R/W
 R/L
 LINE
 STREET ADDRESS

NOTES:
 1. ADDRESSES SHOWN ON THIS PLAT WERE ACCURATE AT THE TIME THIS PLAT WAS FILED.
 2. ADDRESSES ARE SUBJECT TO CHANGE AND SHOULD NEVER BE RELIED ON IN PLACE OF A LEGAL DESCRIPTION.
 3. THIS PLAT MEETS THE OKLAHOMA MINIMUM STANDARD FOR THE PRACTICE OF LAND SURVEYING AS ADOPTED BY THE OKLAHOMA STATE BOARD OF REGISTRATION FOR PROFESSIONAL ENGINEERS AND LAND SURVEYORS.
 IRON PINS SET AT ALL PROPERTY CORNERS WITH PLASTIC CAPS MARKED WITH LS 1094

BENCHMARK:
 IRON PIN IN VALVE BOX LOCATED IN THE CENTER EAST 81ST STREET SOUTH AT NW/4 CORNER SECTION 15
 ELEVATION= 707.45 (NAVD)

PT 3-110
 #DD020314-02
 PREPARED: 12-01-2014
 1 OF 2