

**ASPEN RIDGE BUSINESS PARK
LOT 7, BLOCK 1
ASPEN RIDGE APARTMENTS
PLANNED UNIT DEVELOPMENT NO. 324B
Amendment No. 3**

Item 1 LANDSCAPING AND SCREENING DETAILS:

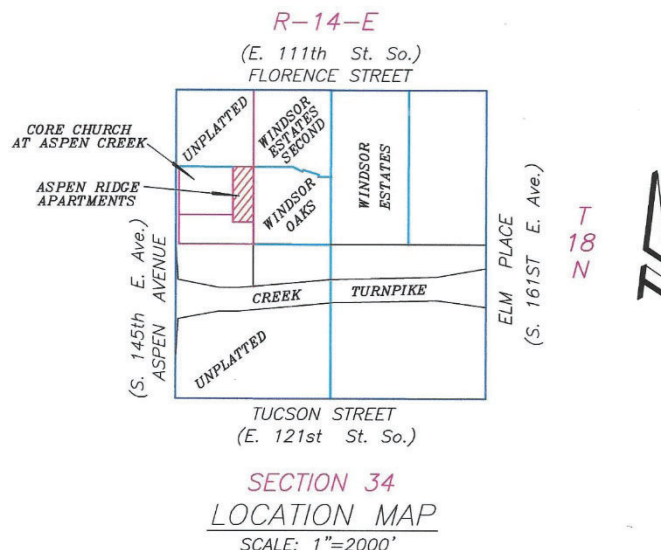
Except as provided herein, the Project landscaping and screening will comply with the requirements of the original approved PUD and the Broken Arrow Zoning Ordinance for landscaped edges and parking lots and drives.

With respect to Lot 7, Block 1 Development Area, the Landscaping and Screening Concept will comply with the requirements of the Broken Arrow Zoning Ordinance except the following:

Section 5.2.B.1.iv. may be modified to reduce the number of trees required in the RM district per dwelling unit from two trees to one large or medium tree provided each tree shall have a caliper of 3 inches (Zoning Ordinance requires 2 inch caliper) and shrubs are increased as follows:

- (a) 8 – 3 gallon shrubs are installed per dwelling unit (Zoning Ordinance requires 5 –3 gallon shrubs); and
- (b) 5 – 1 gallon groundcover or flowering shrubs are installed per dwelling unit (Zoning Ordinance does not require any groundcover or flowering shrubs)."

See attached illustrative landscape site plan.



Oak Trust Development, LLC
9640 So. 67th East Ave.
Tulsa, OK 74133

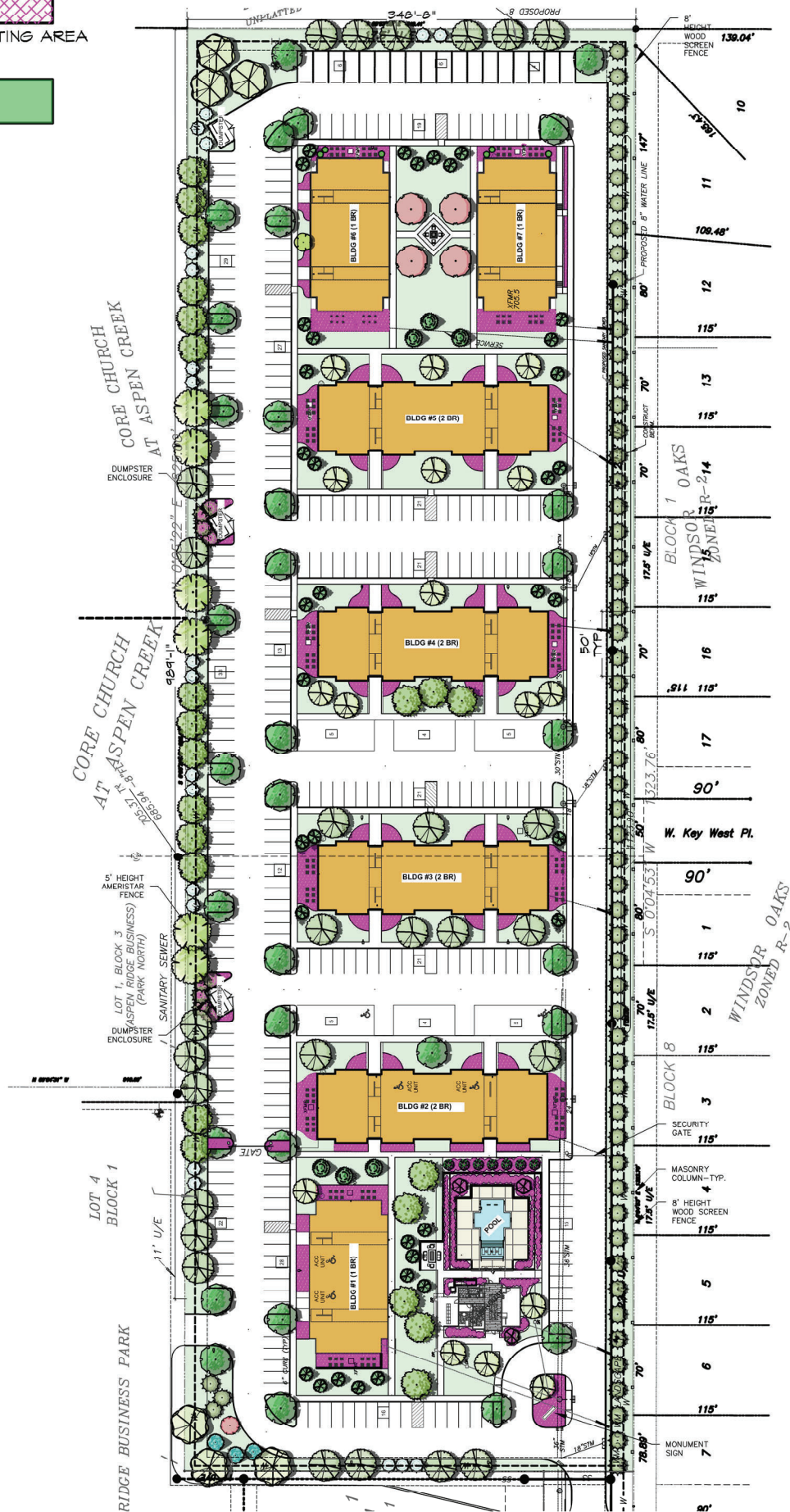
PLANTING LEGEND



SHRUB PLANTING AREA
(MULCHED)



SOD AREA



1

ASPEN RIDGE APARTMENTS - LANDSCAPE SITE PLAN

NOT TO SCALE