

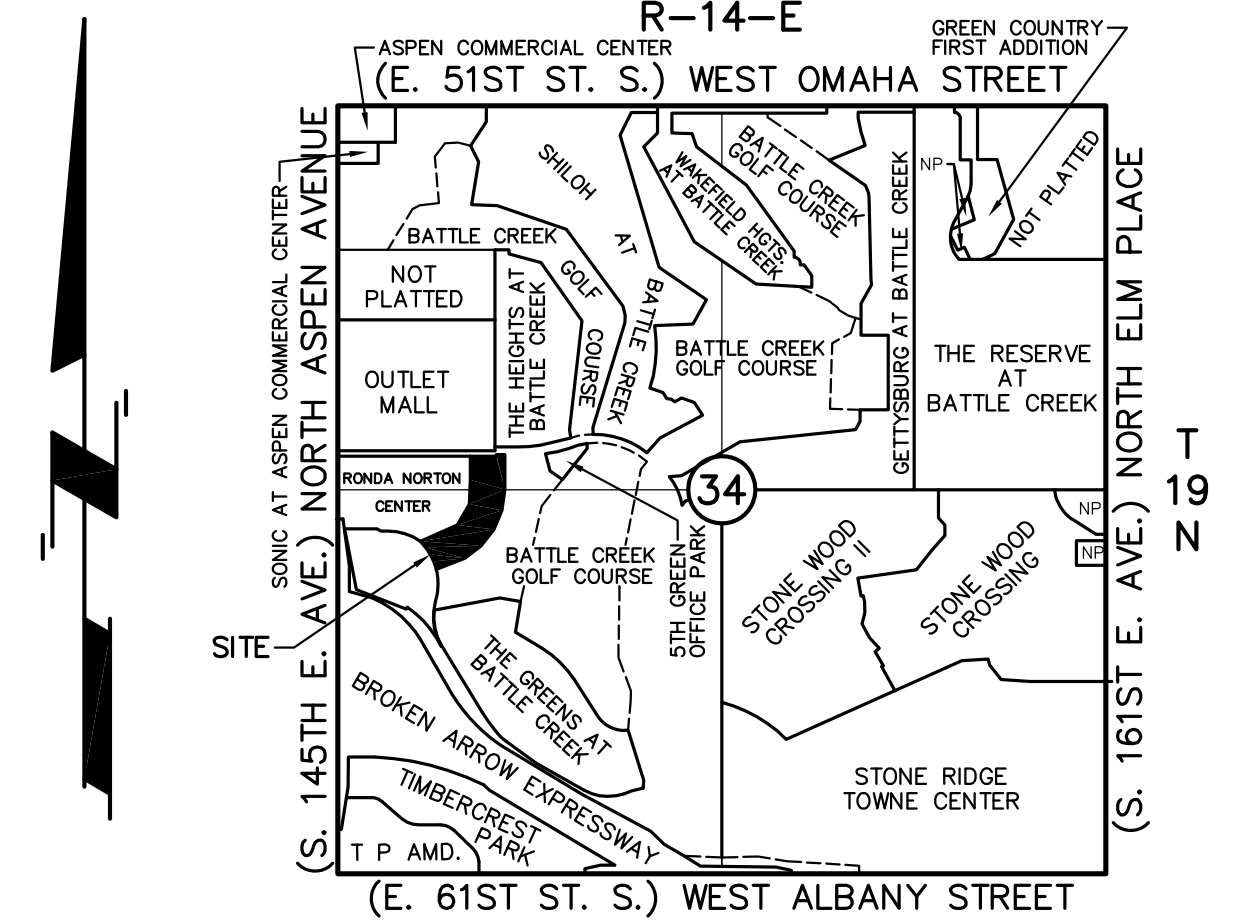
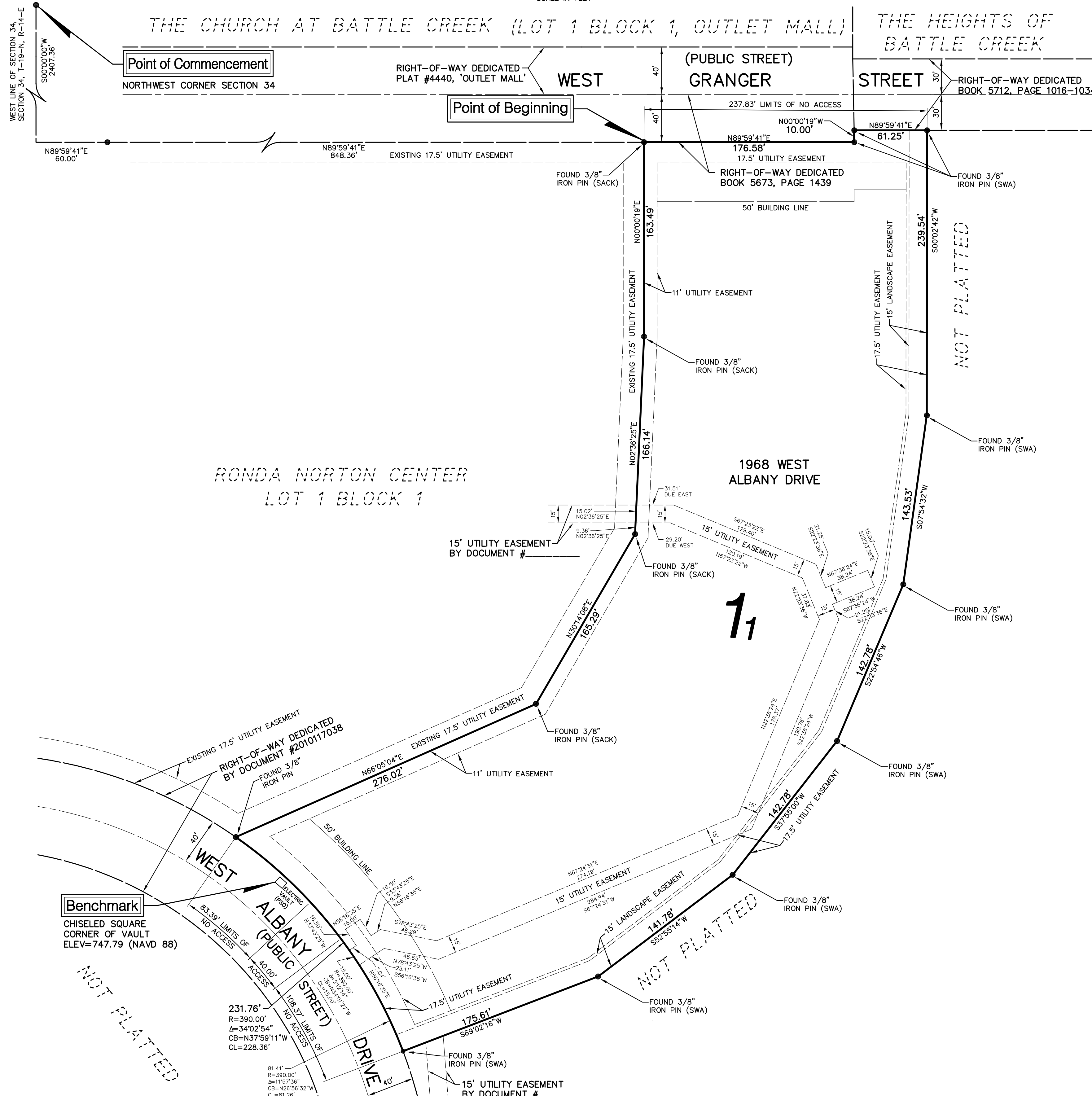
TREASURER'S STAMP  
DO NOT USE THIS SPACE

PLAT NUMBER

APPROVED \_\_\_\_\_ by the City  
Council of the City of Broken Arrow,  
Oklahoma  
Mayor \_\_\_\_\_  
Attest: City Clerk \_\_\_\_\_

COUNTY CLERK STAMP  
DO NOT USE THIS SPACE

'CONDITIONAL FINAL PLAT'  
**Ronda Norton Center II**  
AN ADDITION TO THE CITY OF BROKEN ARROW, TULSA COUNTY, OKLAHOMA  
A SUBDIVISION OF PART OF THE NW/4 AND PART OF THE SW/4  
OF  
SECTION 34 T-19-N, R-14-E  
Planned Unit Development Number 94S-1



Location Map

**Owner**  
TAHOE PROPERTIES LLC  
ATTN: JAMES C. NORTON  
9809 SOUTH MEMORIAL DRIVE  
TULSA, OKLAHOMA 74133  
PHONE: (918) 250-6888

**Engineer / Surveyor**  
SACK AND ASSOCIATES, INC.  
3530 EAST 31ST STREET SOUTH, SUITE A  
TULSA, OKLAHOMA 74135-1519  
PHONE: (918) 592-4111  
E-MAIL: SAI@SACKANDASSOCIATES.COM  
C.A. No. 1783

**Subdivision Statistics**  
SUBDIVISION CONTAINS 1 LOT IN 1 BLOCK  
BLOCK 1 CONTAINS 4.5517 ACRES (198,273 SF)

**Monumentation**  
ALL CORNERS WERE SET USING A  
3/8" IRON PIN WITH A YELLOW CAP  
STAMPED 'SACK LS 1139', UNLESS  
OTHERWISE NOTED.

**Basis of Bearings**  
THE BEARINGS SHOWN HEREON ARE BASED ON  
THE WEST LINE OF THE RECORDED PLAT OF  
OUTLET MALL, PLAT NUMBER 4440, HAVING A  
NON-ASTRONOMICAL BEARING OF DUE NORTH.

**Legend**  
CB = CHORD BEARING  
CL = CHORD LENGTH

**Addresses**  
ADDRESSES SHOWN ON THIS PLAT ARE ACCURATE AT  
THE TIME THE PLAT WAS FILED. ADDRESSES ARE  
SUBJECT TO CHANGE AND SHOULD NEVER BE RELIED  
ON IN PLACE OF THE LEGAL DESCRIPTION.

**Note**  
'STORMWATER DETENTION ACCOMMODATIONS FOR THIS SITE  
ARE PROVIDED IN ACCORDANCE WITH FEE-IN-LIEU OF  
DETENTION DETERMINATION #DD-050917-08.'

