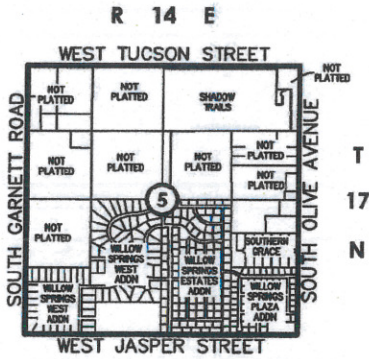
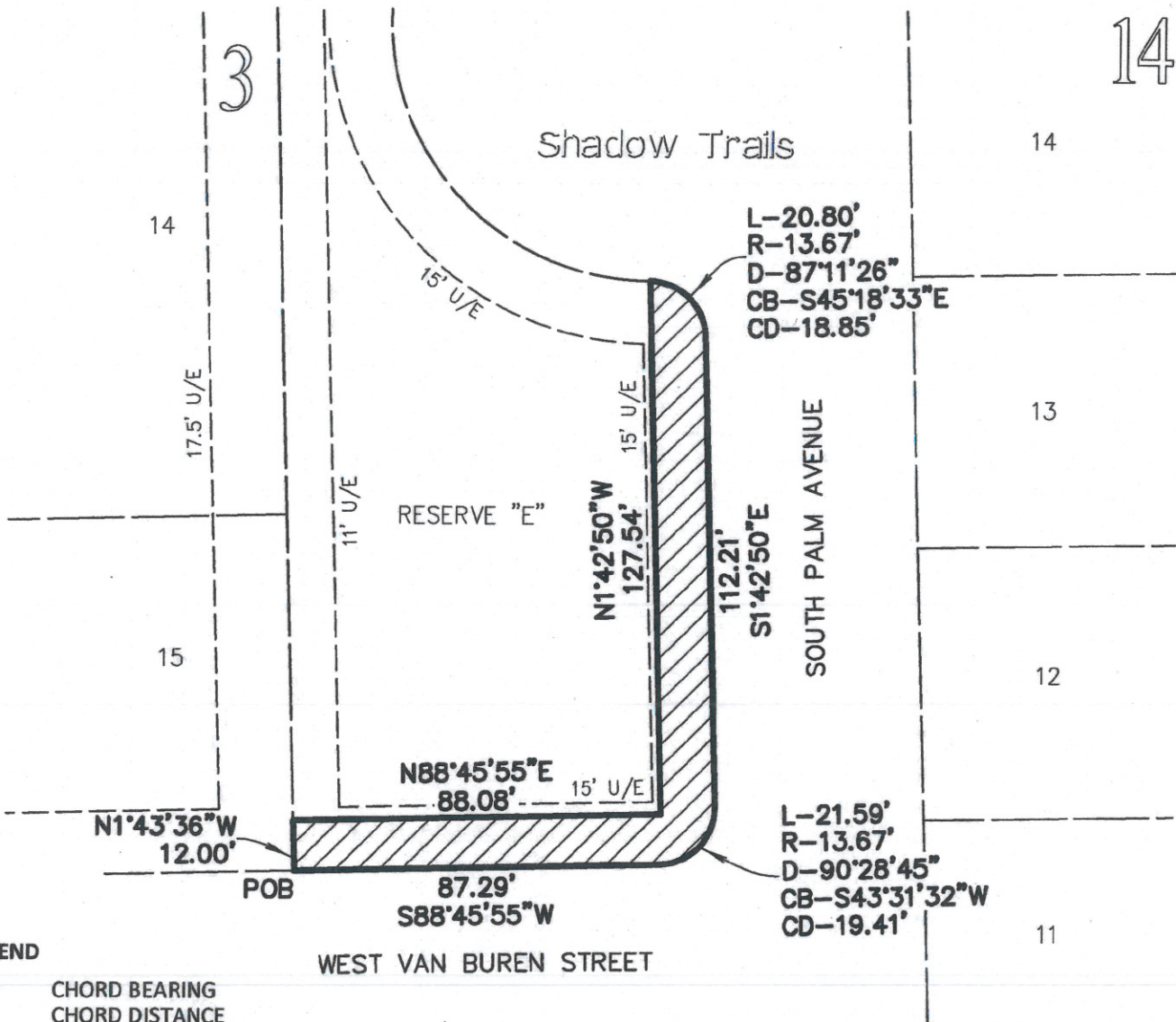


# Exhibit "A.2"

## Shadow Trails Clubhouse Sidewalk Easement Exhibit



Location Map



# Traverse Closure

Crandall's Method

Project: **17034Ex Sidewalk Easement**

Leg#	Bearing	Direction	Distance	Radius	Northing	Easting	New Length	Adjusted Northing	Adjusted Easting
<i>Starting Coordinates:</i>									
1	1.43 36	NW	12.00		5,000.0000	5,000.0000		5,000.0000 0000	5,000.0000 0000
2	88.45 55	NE	88.08		5,011.9946	4,999.6384	12.000	5,011.9945 3618	4,999.6384 2297
3	1.42 50	NW	127.54		5,013.8925	5,087.6980	88.080	5,013.8925 0076	5,087.6975 2131
4	88.54 16	SE	0.00		5,141.3755	5,083.8834	127.540	5,141.3752 8318	5,083.8829 9052
5		R	20.80	13.67	5,141.3755	5,083.8834	0.000	5,141.3752 8318	5,083.8829 9052
6	1.42 50	SE	112.21		5,128.1168	5,097.2860	20.802	5,128.1166 8021	5,097.2855 0111
7	88.45 55	R	21.59	13.67	5,015.9570	5,100.6420	112.210	5,015.9567 3670	5,100.6415 4300
End		SW	87.29		5,001.8814	5,087.2727	21.587	5,001.8810 0384	5,087.2721 7773
					5,000.0004	5,000.0010	87.292	5,000.0000 0000	5,000.0000 0000
					0.0000	0.0000			
					0.0000	0.0000			
					0.0000	0.0000			
					0.0000	0.0000			
					0.0000	0.0000			
					0.0000	0.0000			
					0.0000	0.0000			
					0.0000	0.0000			
					0.0000	0.0000			
					0.0000	0.0000			
					0.0000	0.0000			
8					5,000.0004	5,000.0010			

Ending Coordinates:

Total Traverse Length: **469.51**  
 Closure: **69.31 23 NE** 1: **451,990.859** Closure Precision  
 Closure Area: **2,790.842 SF**  
**0.064 Acres**

The information shown on this sheet is confidential and intended for the use of Tanner Consulting personnel only. This sheet may not be edited, duplicated or filed of record in any form without the express written permission of Tanner Consulting.