

Planned Unit Development XXX

I, the undersigned, the duly qualified and acting county Treasurer, of Wagoner County, Wagoner, Oklahoma, hereby certify that according to the \_\_\_\_\_ tax rolls the taxes on the above description are paid.

Dana Patten, County Treasurer

# 51 Aspen Mini-Storage

A subdivision in the City of Broken Arrow, being a part of the NE/4 of Section 20, Township 18 North, Range 15 East, Wagoner County, State of Oklahoma

## ENGINEER / SURVEYOR

Tulsa Engineering & Planning Associates, Inc.

an Oklahoma corporation  
9820 East 41st Street, Suite 102  
Tulsa, Oklahoma 74146  
918.252.9621

CERTIFICATE OF AUTHORIZATION NO. 531  
RENEWAL DATE: JUNE 30, 2017

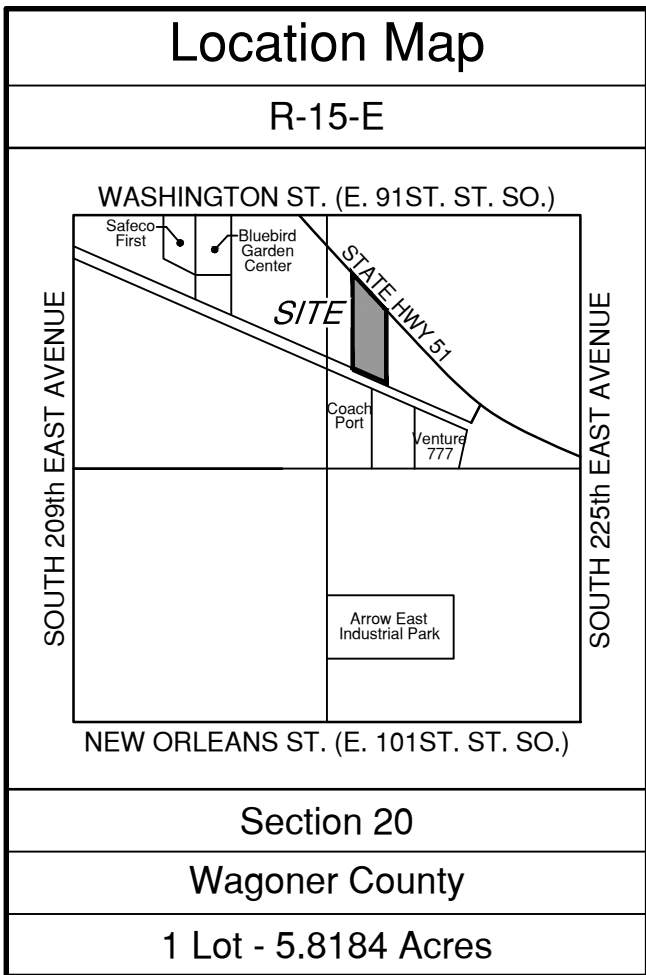


50 25 0 50 100 150  
SCALE: 1"=50'

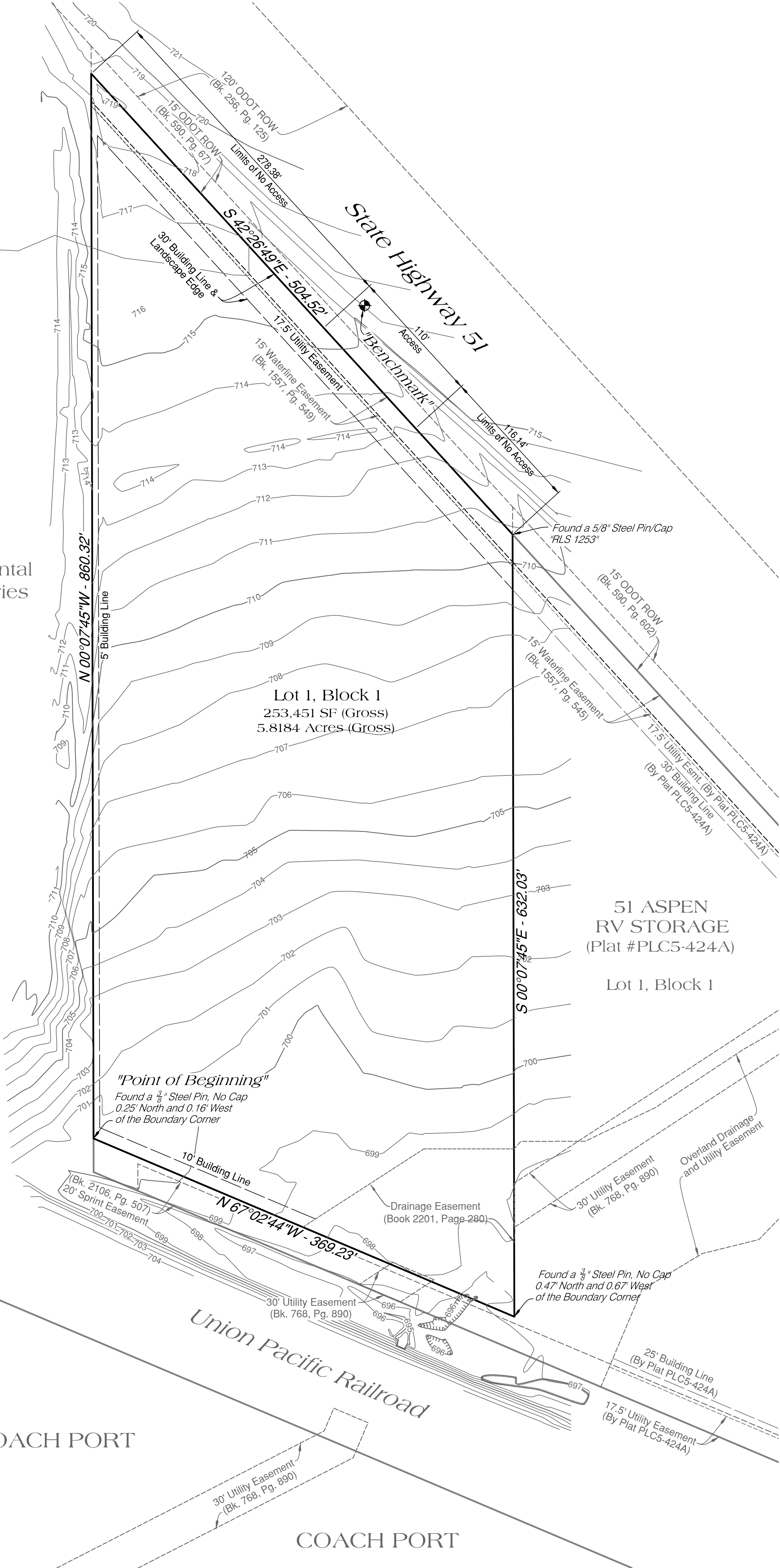
## OWNER / DEVELOPER

Aspen Square, Inc.

an Oklahoma corporation  
P. O. Box 1861  
Muskogee, OK 74402-1861  
918.687.0002



Continental Industries



## Monument Notes

A 5/8" x 18" deformed bar with a yellow plastic cap stamped "RLS 1253" to be set at all plat boundary corners, prior to recordation unless noted otherwise.

## Basis of Bearings

The non-astronomic bearings for said tract are based on an assumed bearing of S 00°07'45" E along the West line of "51 Aspen RV Storage", a subdivision in the City of Broken Arrow, Wagoner County, State of Oklahoma, according to the official recorded plat thereof, Plat No. PLC5-424A, as filed in the records of the Wagoner County Clerk's office.

## Benchmark

Top of a 3/8" Steel Pin with a yellow plastic cap Stamped "TEPA CTR. PT." 217' northwesterly along the northerly line of Lot 1, Block 1, from the northeast corner of Lot 1, Block 1, then northeasterly 37' to Benchmark. Benchmark is 1.2' southwesterly from the southwesterly edge of pavement for State Highway 51.

Elevation = 717.09 NAVD 1988

## Stormwater Detention

Stormwater detention accommodations for this plat are provided in accordance with Fee-In-Lieu of Detention Determination No. DD-60514-15. Stormwater detention for this plat will be provided adjacent to the site.

## Lot Addresses

Addresses shown on this plat were provided by the City of Broken Arrow Engineering Department. The addresses are subject to change and should not be relied upon in place of the legal description.

## Backflow Preventer Valve Table

If the actual finished floor elevation is lower than one (1) foot above the top of rim elevation of the upstream manhole, it shall be the builder's responsibility to install a backflow preventer valve near the building according to Broken Arrow Ordinance No. 2173, Section 24-100, adopted October 5, 1998.

APPROVED \_\_\_\_\_ by the City Council of the City of Broken Arrow, Oklahoma.

Mayor

Attest: City Clerk

51 Aspen Mini-Storage

PT15-XXX

Sheet 1 of 2

Date of Preparation: 12/1/2015