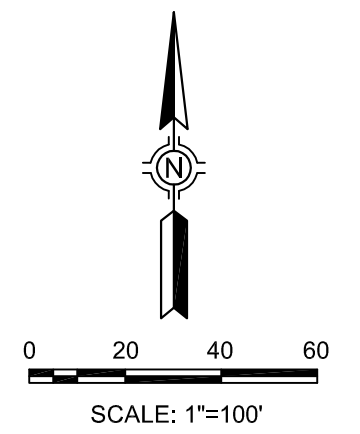
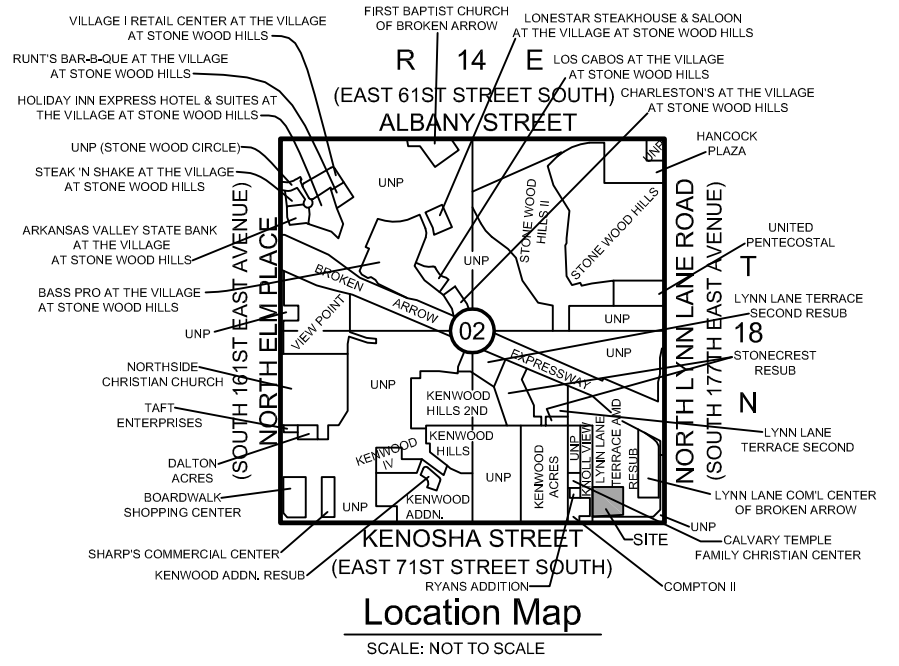
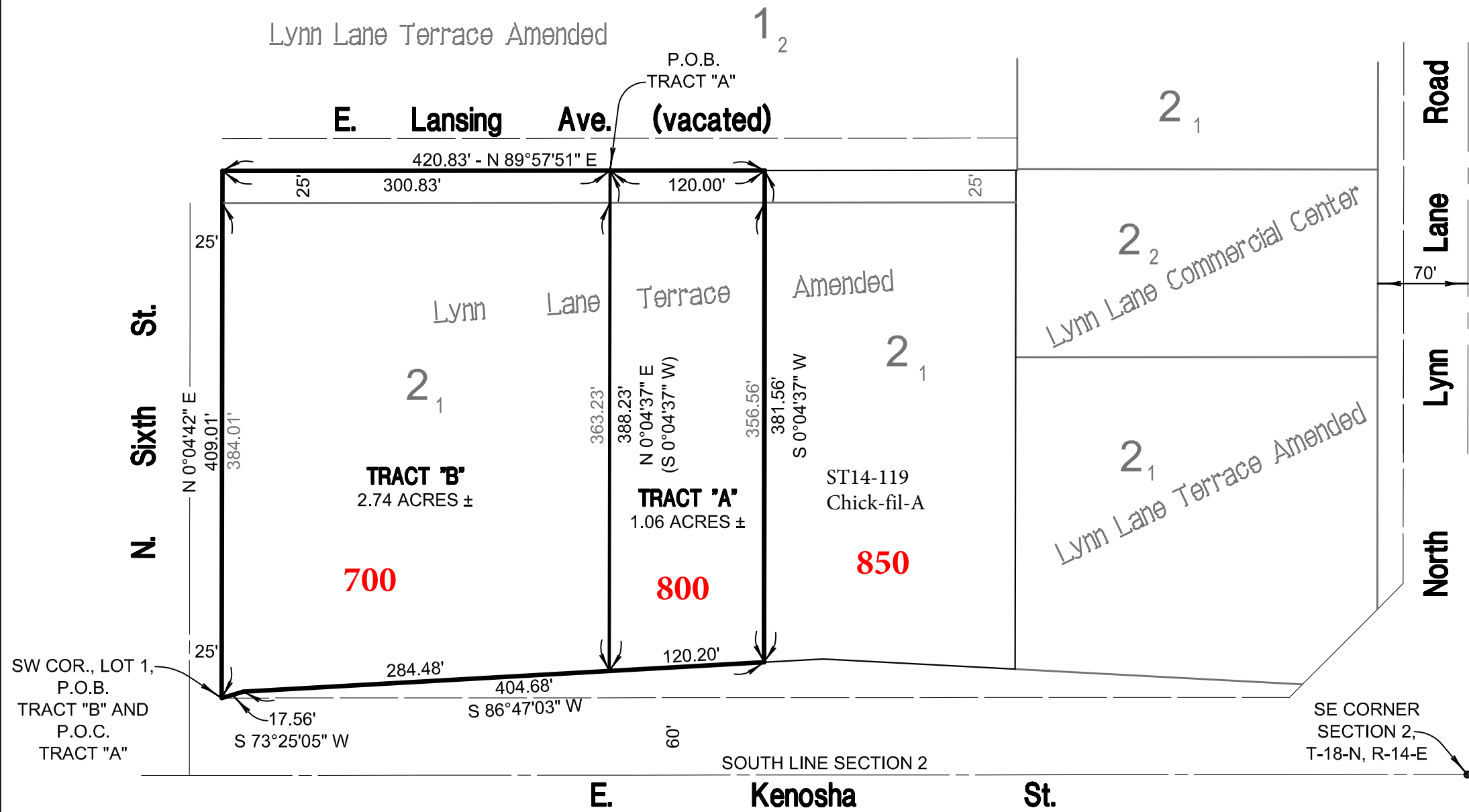


K:\15775-07\EXHIBITS\LOT-SPLIT-EXH.dwg SHEET 1 Feb 16, 2015 - 2:49:39pm SISEMORE WEISZ & ASSOCIATES, INC., 2015



**Lot Split Exhibit
of
Part of Lot One (1), Block Two (2)
Lynn Lane Terrace Amended
City of Broken Arrow, Tulsa County, Oklahoma**

Legend
P.O.B. = POINT OF BEGINNING
P.O.C. = POINT OF COMMENCEMENT

REVISIONS	BY	DATE

Sisemore Weisz & Associates, Inc.
6111 EAST 32nd PLACE
TULSA, OKLAHOMA 74135
C.A. NO. 2421

PHONE: (918) 665-3800
FAX: (918) 665-8668
EXP. DATE 6/30/15

FILE:	1814.0200	SURVEY BY:	DATE:	2/16/15	
ORDER:	15775.07	DRAWN BY:	LAD	SCALE:	1"=100'
BOOK:		CHECKED BY:	MK	SHEET	1 OF 1