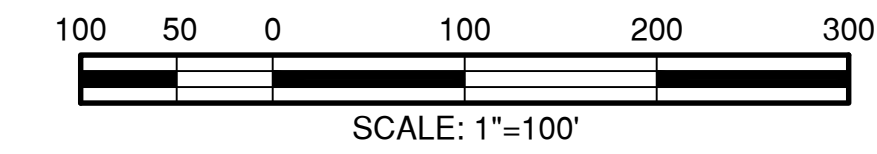


Conceptual Utilities Plan

Spring Hill at Forest Ridge

A subdivision in the City of Broken Arrow, being a part of the N/2 of Section 11, Township 18 North, Range 15 East, Wagoner County, State of Oklahoma



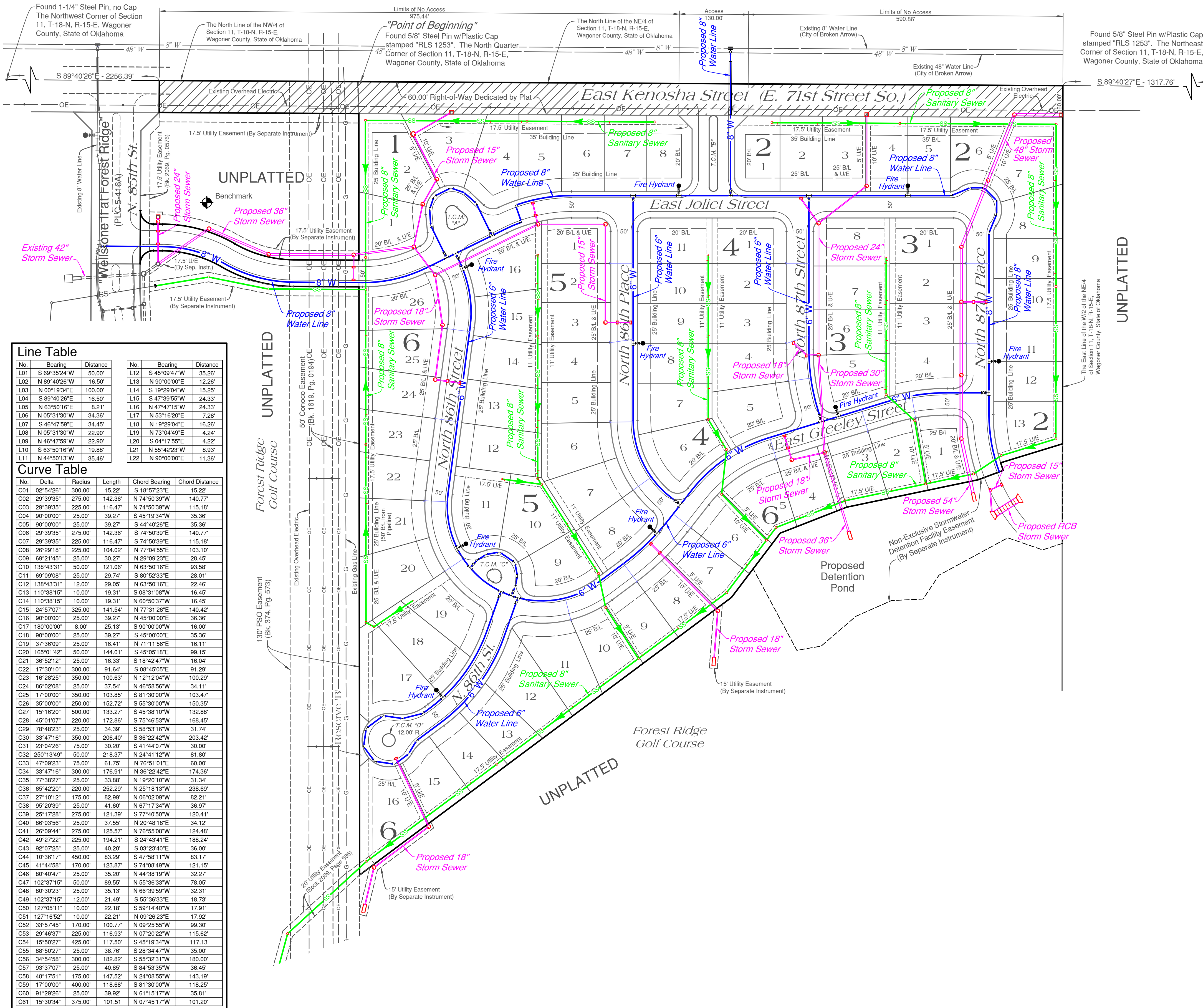
OWNER / DEVELOPER

The Robson Companies, Inc.,
an Oklahoma corporation
901 North Forest Ridge Boulevard
Broken Arrow, Oklahoma 74104
918.357.2787

ENGINEER / SURVEYOR

Tulsa Engineering & Planning Associates, Inc.
an Oklahoma corporation
9820 East 41st Street, Suite 102
Tulsa, Oklahoma 74146
918.252.9621

CERTIFICATE OF AUTHORIZATION No. 531
RENEWAL DATE: JUNE 30, 2017



Line Table

No.	Bearing	Distance	No.	Bearing	Distance
L01	S 69°35'24\"	50.00'	L12	S 45°09'47\"	35.26'
L02	N 89°40'26\"	16.50'	L13	N 90°00'00\"	12.26'
L03	N 00°19'34\"	100.00'	L14	S 19°29'04\"	15.25'
L04	S 89°40'26\"	16.50'	L15	S 47°39'55\"	24.33'
L05	N 63°50'16\"	8.21'	L16	N 47°47'15\"	24.33'
L06	N 05°31'30\"	34.36'	L17	N 59°16'20\"	7.28'
L07	S 46°47'59\"	34.45'	L18	N 19°20'04\"	16.26'
L08	N 05°31'30\"	22.90'	L19	N 73°04'49\"	4.24'
L09	N 46°47'59\"	22.90'	L20	S 04°17'55\"	4.22'
L10	S 63°50'16\"	19.88'	L21	N 55°42'23\"	8.93'
L11	N 44°50'13\"	35.46'	L22	N 90°00'00\"	11.36'

Curve Table

No.	Delta	Radius	Length	Chord Bearing	Chord Distance
C01	02°54'26\"	300.00'	15.22'	S 18°57'23\"	15.22'
C02	29°39'35\"	275.00'	142.36'	N 74°50'39\"	140.77'
C03	29°39'35\"	225.00'	116.47'	N 74°50'39\"	115.18'
C04	90°00'00\"	25.00'	39.27'	S 45°19'34\"	35.36'
C05	90°00'00\"	25.00'	39.27'	S 44°40'26\"	35.36'
C06	29°39'35\"	275.00'	142.36'	S 74°50'39\"	140.77'
C07	29°39'35\"	225.00'	116.47'	S 74°50'39\"	115.18'
C08	26°29'18\"	225.00'	104.02'	N 77°04'55\"	103.10'
C09	69°21'45\"	25.00'	30.27'	N 29°09'23\"	28.45'
C10	138°43'31\"	50.00'	121.06'	N 63°50'16\"	93.58'
C11	169°00'00\"	25.00'	29.74'	S 60°52'30\"	28.01'
C12	138°43'31\"	12.00'	29.05'	N 63°50'16\"	22.46'
C13	110°38'15\"	10.00'	19.31'	S 08°31'08\"	16.45'
C14	110°38'15\"	10.00'	19.31'	N 60°50'37\"	16.45'
C15	24°57'07\"	325.00'	141.54'	N 77°31'26\"	140.42'
C16	90°00'00\"	25.00'	39.27'	N 45°00'00\"	36.36'
C17	169°00'00\"	8.00'	25.13'	S 90°00'00\"	16.50'
C18	90°00'00\"	25.00'	39.27'	S 45°00'00\"	35.36'
C19	37°36'09\"	25.00'	16.41'	N 71°11'56\"	16.11'
C20	165°01'42\"	50.00'	144.01'	S 45°05'18\"	99.15'
C21	36°52'12\"	25.00'	16.33'	S 18°42'47\"	16.04'
C22	17°30'10\"	300.00'	91.64'	S 08°45'05\"	91.29'
C23	16°29'25\"	350.00'	100.63'	N 12°12'04\"	100.29'
C24	66°07'09\"	25.00'	37.54'	N 46°58'54\"	34.11'
C25	17°00'00\"	350.00'	103.85'	S 81°30'00\"	103.47'
C26	35°00'00\"	250.00'	152.72'	S 55°30'00\"	150.35'
C27	15°16'20\"	500.00'	133.27'	S 45°38'10\"	132.88'
C28	45°01'07\"	220.00'	172.86'	S 75°46'53\"	168.45'
C29	78°48'23\"	25.00'	34.39'	S 58°53'16\"	31.74'
C30	33°47'16\"	350.00'	206.40'	S 36°22'42\"	203.42'
C31	23°04'29\"	75.00'	30.20'	N 41°40'10\"	30.00'
C32	250°13'40\"	50.00'	218.37'	N 24°41'12\"	81.80'
C33	47°09'23\"	75.00'	61.75'	N 76°51'01\"	60.00'
C34	33°47'16\"	300.00'	176.91'	N 36°22'42\"	174.36'
C35	77°38'27\"	25.00'	33.88'	N 19°20'10\"	31.34'
C36	65°42'20\"	220.00'	252.29'	N 25°18'13\"	238.69'
C37	27°10'12\"	175.00'	82.99'	N 06°02'09\"	82.21'
C38	95°20'39\"	25.00'	41.60'	N 67°17'34\"	36.97'
C39	25°17'28\"	275.00'	121.39'	S 77°40'50\"	120.41'
C40	86°03'56\"	25.00'	37.55'	N 20°48'18\"	34.12'
C41	26°09'44\"	275.00'	125.57'	N 76°55'08\"	124.48'
C42	49°27'22\"	225.00'	194.21'	S 24°43'41\"	188.24'
C43	92°07'25\"	25.00'	40.20'	S 03°23'40\"	36.00'
C44	10°36'17\"	450.00'	83.29'	S 47°38'11\"	83.17'
C45	41°44'59\"	170.00'	120.87'	S 74°38'49\"	121.15'
C46	80°40'47\"	25.00'	35.20'	N 44°38'19\"	32.27'
C47	102°37'15\"	50.00'	89.55'	S 55°36'33\"	78.05'
C48	80°30'23\"	25.00'	35.13'	N 66°39'59\"	32.31'
C49	102°37'15\"	12.00'	21.49'	S 55°36'33\"	18.73'
C50	127°05'11\"	10.00'	22.18'	S 59°14'40\"	17.91'
C51	127°05'22\"	10.00'	22.21'	N 09°26'22\"	17.92'
C52	33°57'45\"	170.00'	100.77'	N 09°35'34\"	99.39'
C53	29°46'37\"	225.00'	116.93'	N 07°20'22\"	115.62'
C54	15°50'27\"	425.00'	117.50'	S 45°19'34\"	117.13'
C55	88°50'27\"	25.00'	38.76'	S 28°34'47\"	35.00'
C56	34°54'58\"	300.00'	182.82'	S 55°32'31\"	180.00'
C57	93°37'07\"	25.00'	40.85'	S 84°53'35\"	36.45'
C58	48°17'51\"	175.00'	147.52'	N 24°38'55\"	143.16'
C59	17°00'00\"	400.00'	118.68'	S 81°30'00\"	118.25'
C60	91°29'26\"	25.00'	39.92'	N 61°15'17\"	35.81'
C61	15°30'34\"	375.00'	101.51'	N 07°45'17\"	101.20'

Legend

- = ROW Dedicated by this plat
- BL = Building Line
- UE = Utility Easement
- BL & UE = Building Line and Utility Easement
- G— = Gas Line
- OE— = Overhead Electric Line
- D.A.L. = Driveway Access Limitation
- T.C.M. = Traffic Control Median

Monument Notes

A 6\" x 18\" deformed bar with a yellow plastic cap stamped \"RLS 1253\" to be set at all plat boundary corners, prior to recordation unless noted otherwise.

A 5\" x 18\" deformed bar with a yellow plastic cap stamped \"RLS 1253\" has been set at each corner along the boundary common with \"Wellstone II at Forest Ridge\".

A 3\" x 18\" deformed bar with a yellow plastic cap stamped \"CA 531\" to be set at all street centerline intersections, points of curve, points of tangent, points of compound curve, points of reverse curve, center of cut-thru-siacs and center of easements, after completion of improvements, unless noted otherwise.

Basis of Bearings

The non-astronomic bearings for said tract are based on a platted bearing of S 89°40'26\"E along the north line of the NW/4 of Section 11, T-18-N, R-15-E of the Indian Meridian, Wagoner County, State of Oklahoma, according to the Official U.S. Government Survey thereof.

Benchmark

Top of a 1 1/4\" Iron Pin at the intersection of East Kenosha Street and North Midway Road (Section Corner)

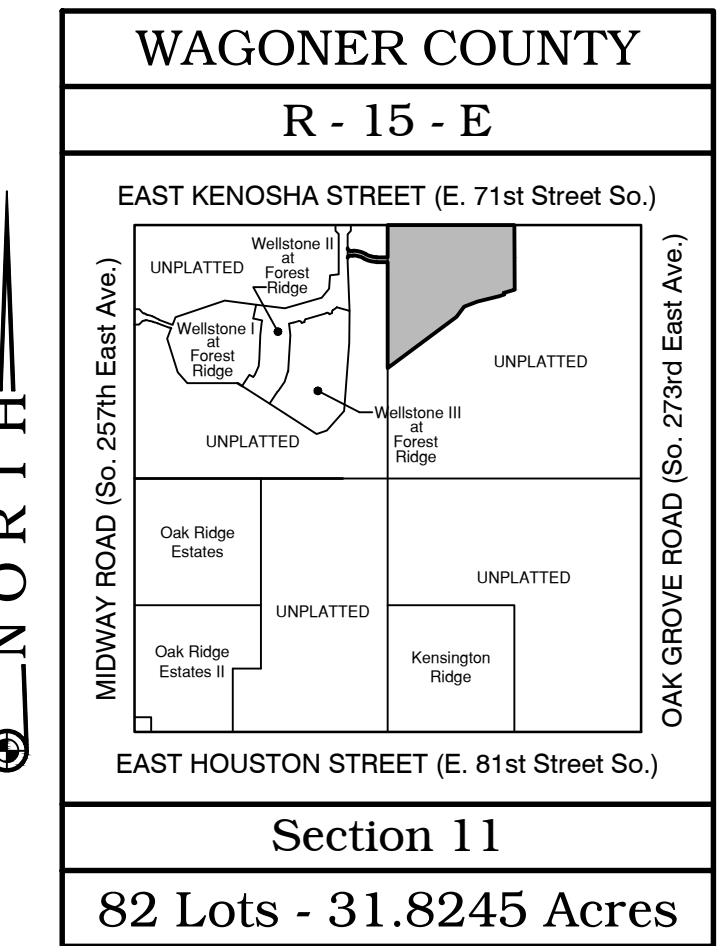
Elevation = 628.09 NGVD 1929

Notes

- Water to be supplied by the City of Broken Arrow.
- Sewage to be received by the City of Broken Arrow.

Stormwater Detention

Stormwater detention accommodations for this plat are provided in accordance with Fee-In-Lieu of Detention Determination No. 00-00000-00. Stormwater detention for this plat will be provided adjacent to the site.



APPROVED _____ by the City Council of the City of Broken Arrow, Oklahoma

Mayor

Attest: City Clerk

I, the undersigned, the duly qualified and acting county Treasurer, of Wagoner County, Wagoner, Oklahoma, hereby certify that according to the _____ tax rolls the taxes on the above description are paid.

Dana Patten, County Treasurer