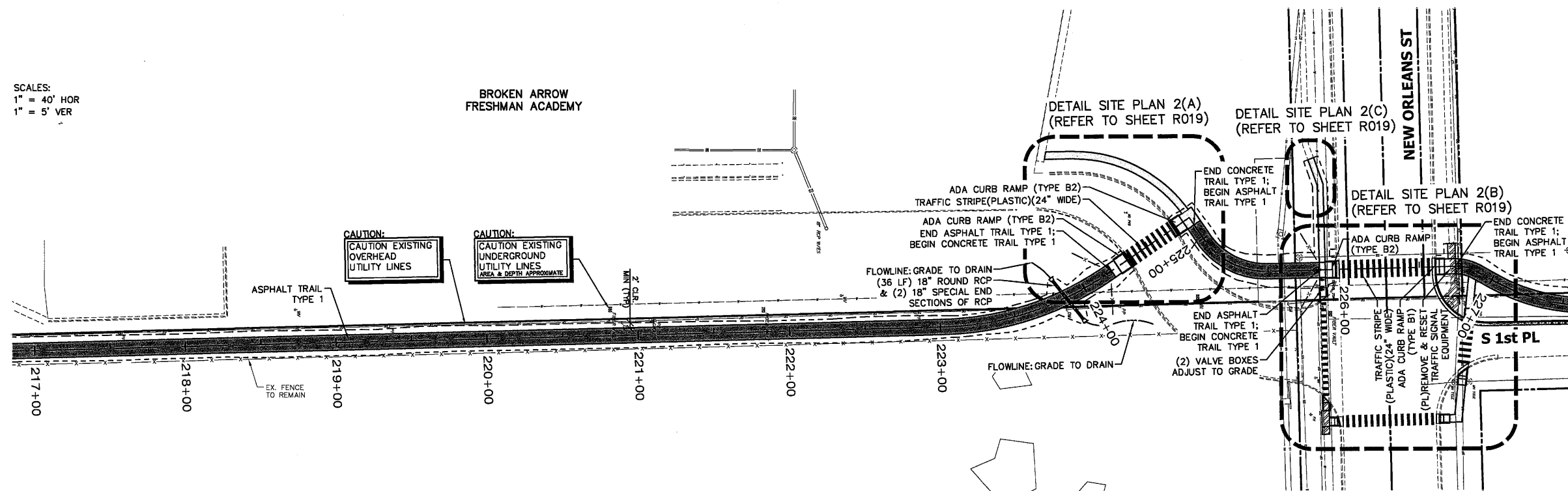


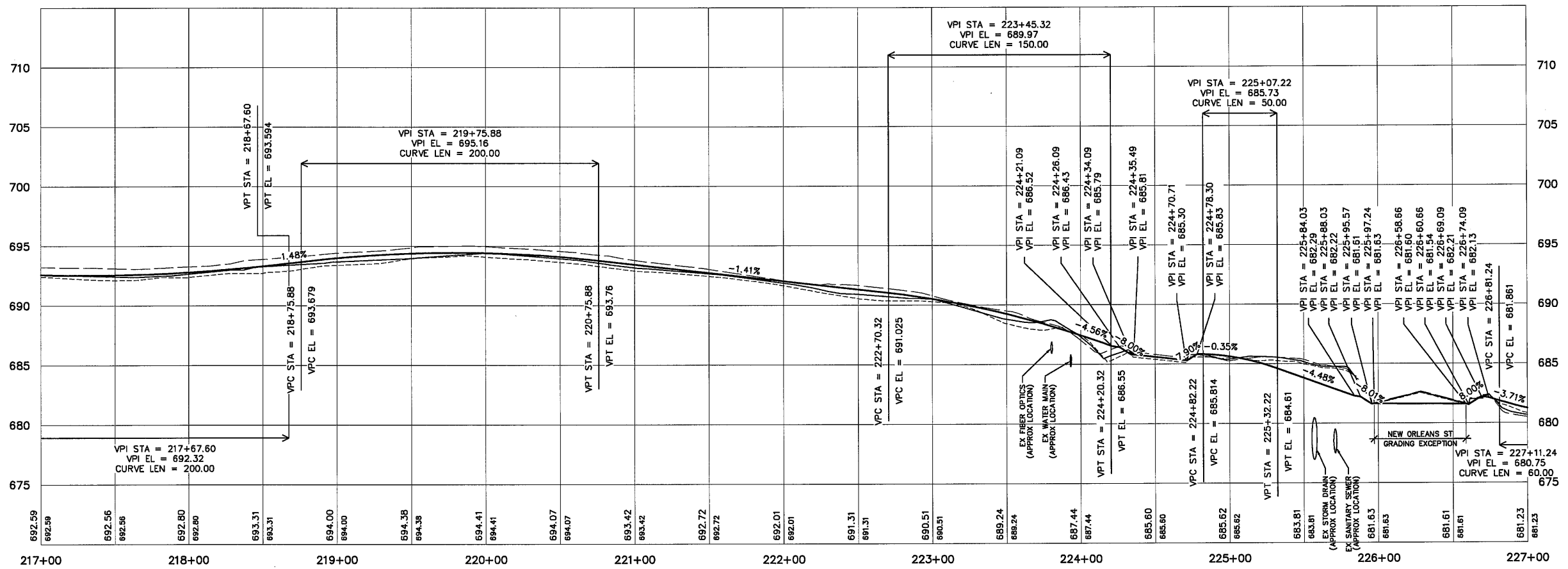
SCALES:
1" = 40' HOR
1" = 5' VER

BROKEN ARROW
FRESHMAN ACADEMY



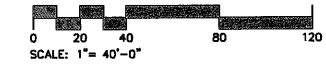
PLAN LEGEND:

EX. SIGN	EX. POLE	EX. TRAFFIC CONTROL BOX	EX. LIGHT POLE	EX. POWER POLE	EX. FIRE HYDRANT	EX. GUY WIRE	EX. UNDERGROUND FIBER VAULT	EX. STORMWATER MANHOLE	EX. GAS METER	EX. ELECTRIC PEDESTAL	EX. TELEPHONE PEDESTAL	EX. TREES TO REMAIN	EX. TREE LINE	EX. PROPERTY LINE	EX. EASEMENT LINE	EX. BUILDING SETBACK	EX. PAVEMENT	EX. FENCE	EX. OVERHEAD ELECTRIC LINE	EX. STORM DRAIN LINE	EX. SANITARY SEWER LINE	EX. FLOW LINE
REMOVE EX. CONCRETE SIDEWALK	REMOVE EX. ASPHALT ROAD	RTD	M&M	TRAIL CENTER LINE ALIGNMENT	TRAIL (REFER TO PLANS FOR TYPES & LOCATIONS)	6" CONCRETE DRIVEWAY H.E.S.	5" CONCRETE SIDEWALK	RETAINING WALL	REMOVABLE BOLLARD	JUMBO SPLIT RAIL FENCE	FLOWLINE	ROUND RCP (REFER TO PLANS FOR SIZE)	SPECIAL END SECTION OF RCP (REFER TO PLANS FOR SIZE)	DRAINAGE STRUCTURE (REFER TO CIVIL)	MANHOLE (REFER TO CIVIL)	VALVE BOXES ADJUST TO GRADE	TRAFFIC STRIPE (PLASTIC)(24" WIDE)	(PL) REMOVE & RESET EXISTING SIGNS	FILL CATCHLINE	CUT CATCHLINE		



PROFILE LEGEND

—	ORIGINAL GROUND PROFILE - TRAIL CENTERLINE
—	DESIGN PROFILE - TRAIL CENTERLINE
---	7' OFFSET LEFT - TRAIL SHOULDER
---	7' OFFSET RIGHT - TRAIL SHOULDER
---	PROPOSED SWALE



BROKEN ARROW CREEK TRAIL

PLANS AND ESTIMATES PREPARED BY:

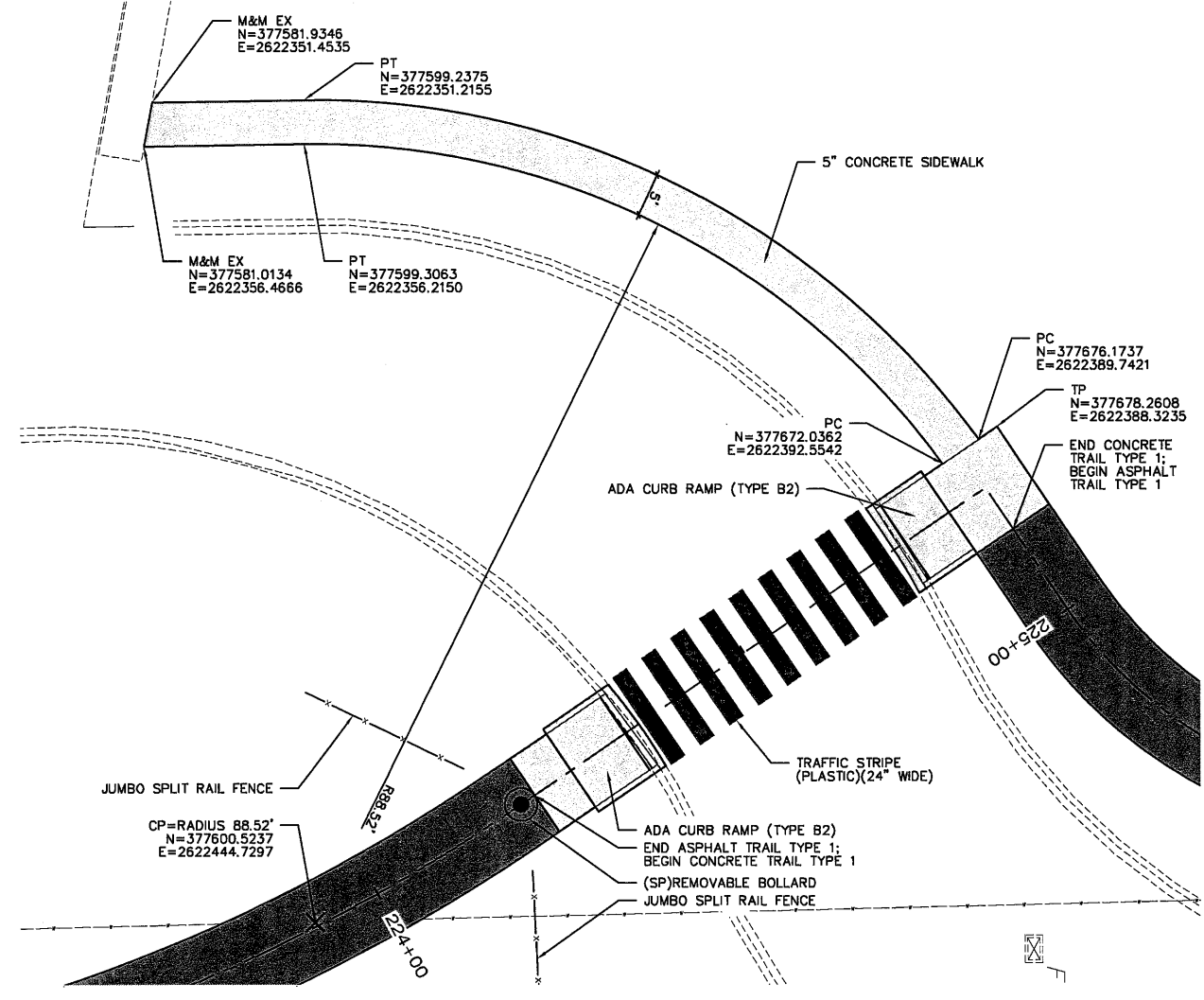
DESIGN	RLS	02/18
DRAWN	SKR	02/18
CHECKED	RLS	02/18
APPROVED		

JP NO. 31601(04)

R.L. SHEARS COMPANY, P.C.
Landscape Architects
1522 SOUTH BOULDER AVENUE
TULSA, OKLAHOMA 74119
TEL 918.582.0612 FAX 918.582.0613

PLAN AND PROFILE (3)

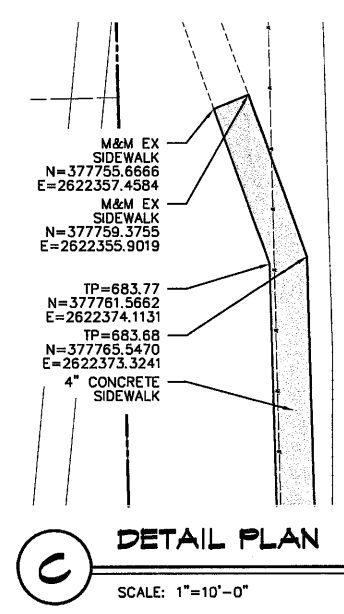
SHEET R015



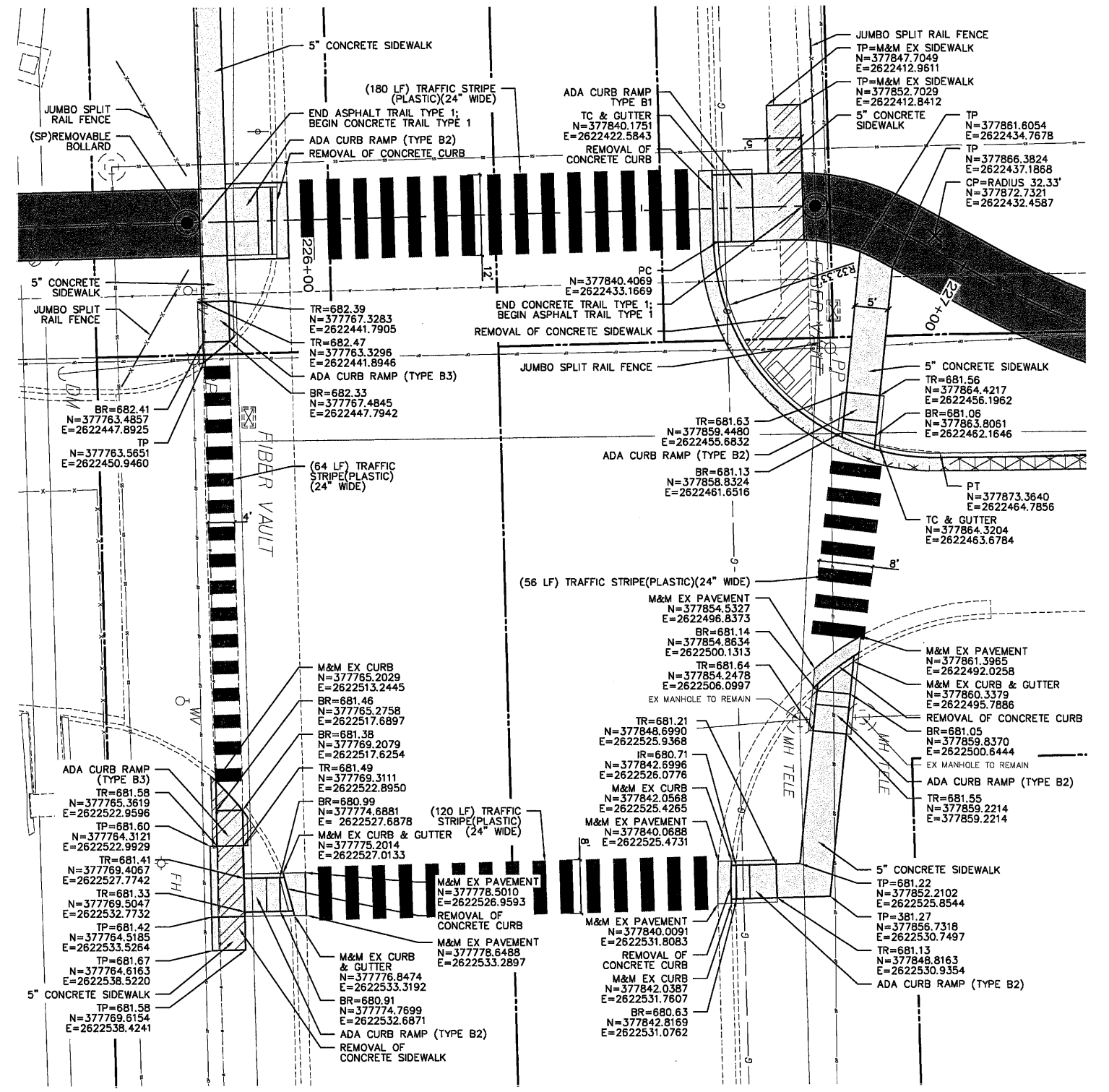
A DETAIL PLAN
SCALE: 1"=10'-0"

PLAN LEGEND:

<ul style="list-style-type: none"> EX. SIGN EX. POLE EX. TRAFFIC CONTROL BOX EX. LIGHT POLE EX. POWER POLE EX. FIRE HYDRANT EX. GUY WIRE EX. UNDERGROUND FIBER VAULT EX. STORMWATER MANHOLE EX. GAS METER EX. ELECTRIC PEDESTAL EX. TELEPHONE PEDESTAL EX. TREES TO REMAIN EX. TREE LINE EX. PROPERTY LINE EX. EASEMENT LINE EX. BUILDING SETBACK EX. PAVEMENT EX. FENCE EX. OVERHEAD ELECTRIC LINE EX. STORM DRAIN LINE EX. SANITARY SEWER LINE EX. FLOW LINE REMOVE EX. CONCRETE SIDEWALK REMOVE EX. ASPHALT ROAD 	<ul style="list-style-type: none"> REFER TO DETAIL TRAIL CENTER LINE ALIGNMENT TRAIL (REFER TO PLANS FOR TYPES & LOCATIONS) 6" CONCRETE DRIVEWAY H.E.S. 5" CONCRETE SIDEWALK RETAINING WALL CONCRETE CURB & GUTTER REMOVABLE BOLLARD JUMBO SPLIT RAIL FENCE FLOWLINE ROUND RCP (REFER TO PLANS FOR SIZE) DRAINAGE STRUCTURE (REFER TO CIVIL) MANHOLE (REFER TO CIVIL) TRAFFIC STRIPE (THERMOPLASTIC) (24" WIDE)(WHITE) (PL)REMOVE & RESET EXISTING SIGNS FILL CATCHLINE CUT CATCHLINE
--	--



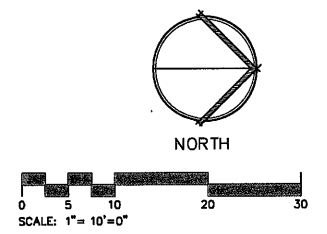
C DETAIL PLAN
SCALE: 1"=10'-0"



B DETAIL PLAN
SCALE: 1"=10'-0"

LABEL LEGEND:

TP	TOP OF PAVEMENT	R	RADIUS
TR	TOP OF RAMP	EX	EXISTING
BR	BOTTOM OF RAMP	M&M	MEET & MATCH
PC	POINT OF CURVATURE	N	NORTHING
PT	POINT OF TANGENCY	E	EASTING
CP	CENTER POINT		



BROKEN ARROW CREEK TRAIL

PLANS AND ESTIMATES PREPARED BY:		
DESIGN	RLS	02/18
DRAWN	SKR	02/18
CHECKED	RLS	02/18
APPROVED		
JP NO. 31601(D4)		

R.L. SHEARS COMPANY, P.C.
Landscape Architects
1522 SOUTH CARSON AVENUE
TULSA, OKLAHOMA 74119
TEL 918.582.0612 FAX 918.582.0613

DETAIL SITE PLAN (2)

SIGNAL HEAD NUMBER	NUMBER AND TYPE	MOUNTING	VISOR	BACKPLATE
1,2,4,5,6,7,9,10	8 - ONEWAY (S-6)	MAST ARM	V-1	B-2
3,8	2 - ONEWAY (S-13)L	MAST ARM	V-1	B-2
11,12,13,14,15,16,17,18	8 - ONEWAY (S-20)	CLAMP	---	---

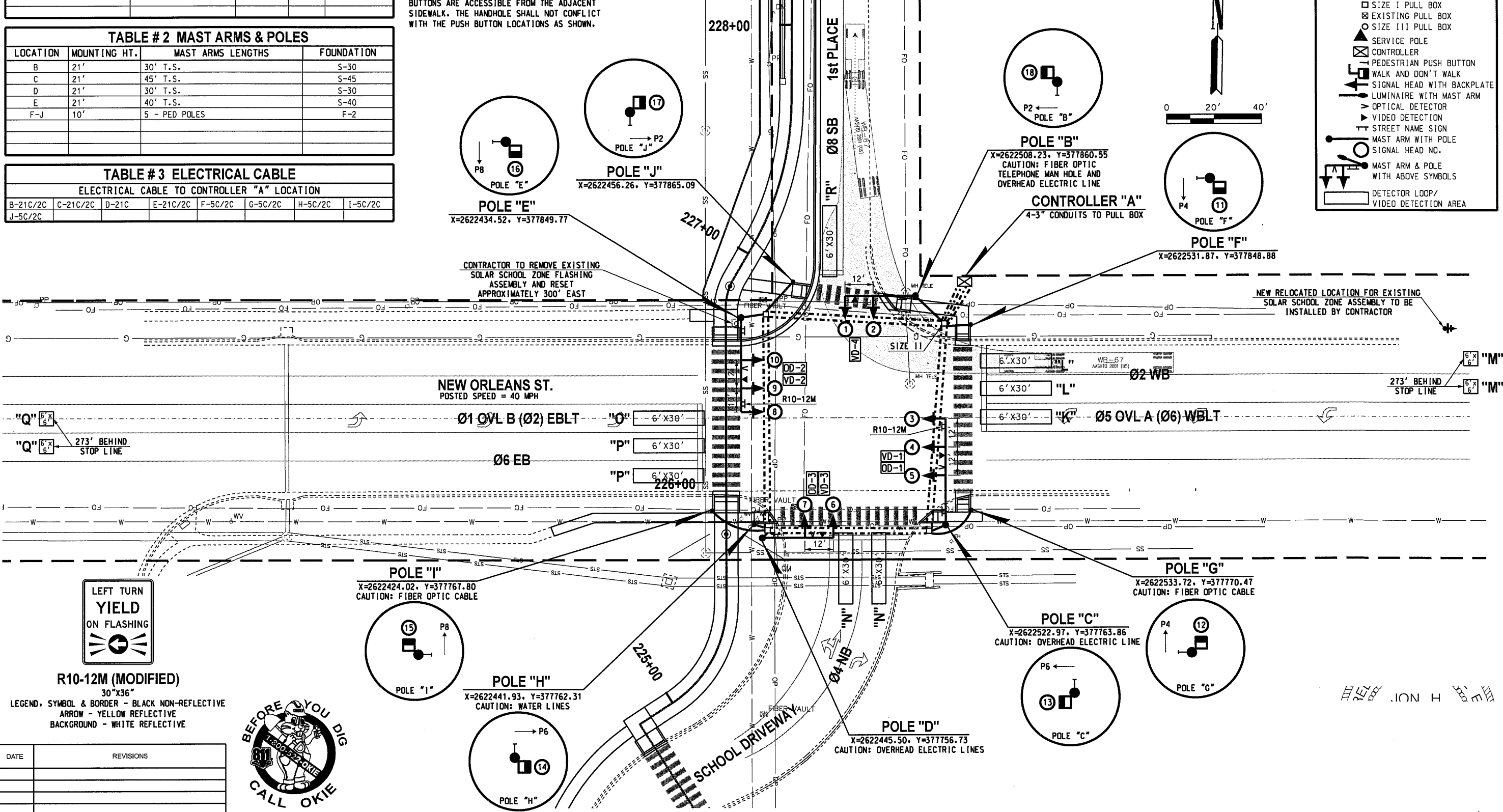
LOCATION	MOUNTING HT.	MAST ARMS LENGTHS	FOUNDATION
B	21'	30' T.S.	S-30
C	21'	45' T.S.	S-45
D	21'	30' T.S.	S-30
E	21'	40' T.S.	S-40
F-J	10'	5 - PED POLES	F-2

ELECTRICAL CABLE TO CONTROLLER "A" LOCATION							
B-21C/2C	C-21C/2C	D-21C	E-21C/2C	F-5C/2C	G-5C/2C	H-5C/2C	I-5C/2C
J-5C/2C							

PUSH BUTTON NOTE:
THE POLE ENLARGEMENT DETAIL IS PROVIDED FOR INFORMATIONAL PURPOSES ONLY. THE PLACEMENT OF THE PEDESTRIAN PUSH BUTTONS AND SIGNAL HEADS SHALL BE INSTALLED ON THE POLES SUCH THAT THE SIGNAL HEADS ARE VISIBLE FROM THE CROSSWALK AND THE PUSH BUTTONS ARE ACCESSIBLE FROM THE ADJACENT SIDEWALK. THE HANDHOLE SHALL NOT CONFLICT WITH THE PUSH BUTTON LOCATIONS AS SHOWN.

VIDEO DETECTION NOTE:
VIDEO VEHICLE DETECTION WILL BE PROVIDED FOR THIS INTERSECTION. THE DETECTOR LOOPS SHOWN ON THE PAVEMENT ARE SHOWN ONLY TO DEPICT THE AREAS OF DETECTION FOR THE VIDEO DETECTION UNITS ALONG WITH THE PHASES THAT EACH VIDEO DETECTOR UNIT WILL CALL.

-----	1 1/2" ELECT. CONDUIT
-----	2" ELECT. CONDUIT
-----	3" ELECT. CONDUIT
-----	4" ELECT. CONDUIT
-----	EXISTING CONDUIT
-----	EXISTING PULL BOX
-----	SIZE I PULL BOX
-----	EXISTING PULL BOX
-----	SIZE III PULL BOX
-----	SERVICE POLE
-----	CONTROLLER
-----	PEDESTRIAN PUSH BUTTON
-----	WALK AND DON'T WALK
-----	SIGNAL HEAD WITH BACKPLATE
-----	LUMINAIRE WITH MAST ARM
-----	OPTICAL DETECTOR
-----	VIDEO DETECTION
-----	STREET NAME SIGN
-----	MAST ARM WITH POLE
-----	SIGNAL HEAD NO.
-----	MAST ARM & POLE WITH ABOVE SYMBOLS
-----	DETECTOR LOOP/VIDEO DETECTION AREA



R10-12M (MODIFIED)
30"X36"

LEGEND. SYMBOL & BORDER - BLACK NON-REFLECTIVE
ARROW - YELLOW REFLECTIVE
BACKGROUND - WHITE REFLECTIVE

LEFT TURN YIELD ON FLASHING



DATE	REVISIONS



TRAFFIC ENGINEERING CONSULTANTS
6931 S. 66TH E. AVE., STE 100
TULSA, OK. 74133
PHONE: 918-481-8484
FAX: 918-481-3163

NEW ORLEANS ST. & 1st PL.

SIGNAL PLAN

PROFILE SCALE:	DESIGN	DATE	DRAFTED	DATE
HORIZ. -	JHE	08/23/18	SB	08/23/18
VERT. -	REVIEWED	DATE	APPROVED	DATE
DRAWING NAME:	SHEET	T001	PROJECT NO.	31601(04)
OF				

08/23/18 G:\P\Projects\10-800 New Orleans & 1st Place Signal - BA\CAD\100-360104-SIGNAL.dgn