

Exhibit of Detention Tracts

PLOT DATE: Fri, 06 Sep 2013 FILE: P:\1915\31-RAINSAY REGIONAL DETENTION-10003\TRACT EXHIBITS

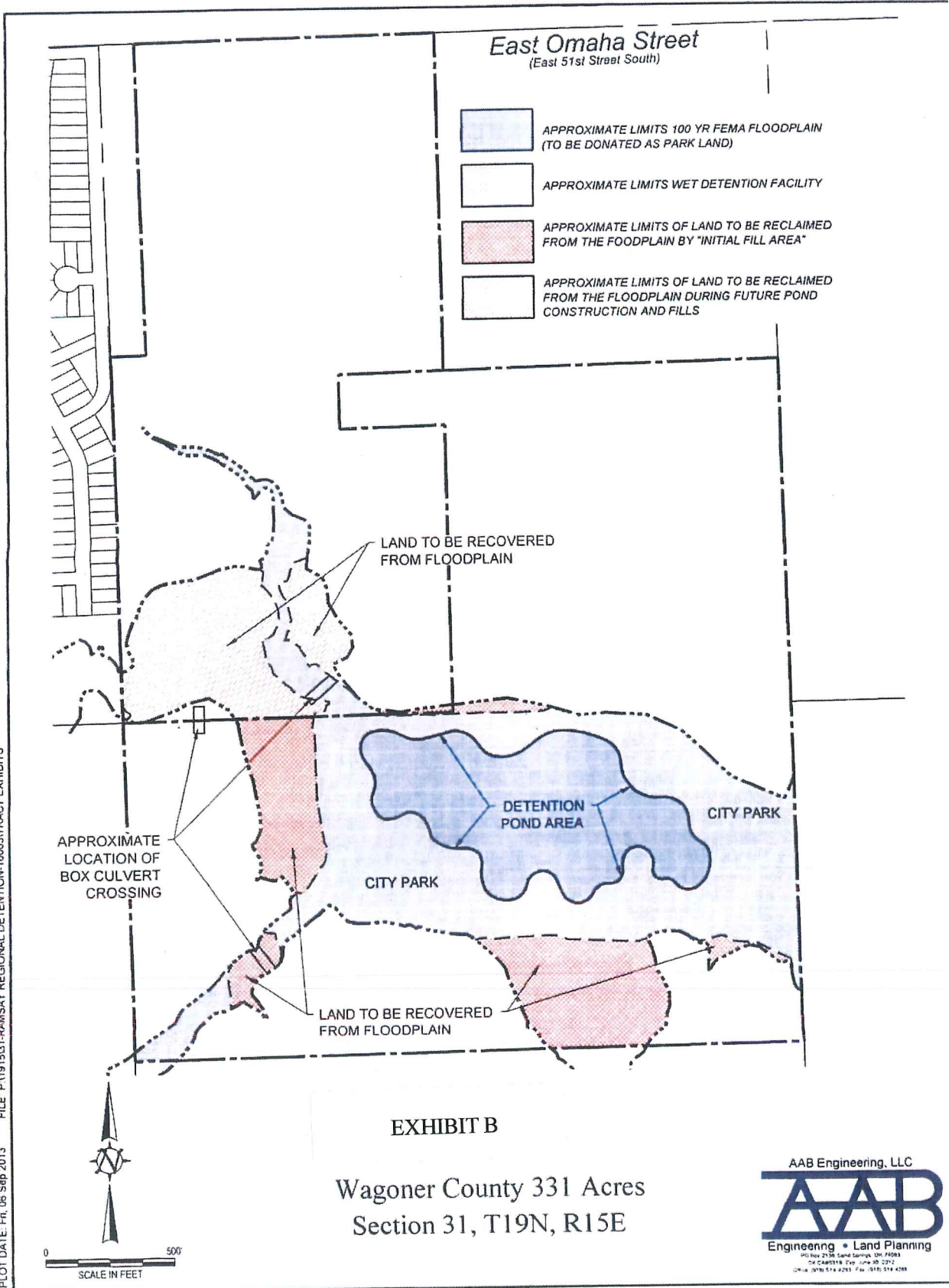


EXHIBIT C

TUCSON VILLAGE, LLC

A TRACT OF LAND SITUATED IN LOT 1 OF SECTION 1, TOWNSHIP 17 NORTH, RANGE 14 EAST, OF THE INDIAN BASE AND MERIDIAN, CITY OF BROKEN ARROW, TULSA COUNTY, STATE OF OKLAHOMA, ACCORDING TO THE U.S. GOVERNMENT SURVEY THEREOF, MORE PARTICULARLY DESCRIBED AS FOLLOWS:

BEGINNING AT THE NORTHEAST CORNER OF SAID SECTION 1; THENCE SOUTH 01°23'53" EAST ALONG THE EAST LINE OF SAID SECTION 1, A DISTANCE OF 780.00 FEET; THENCE SOUTH 88°36'07" WEST A DISTANCE OF 84.97 FEET; THENCE NORTH 41°36'49" WEST A DISTANCE OF 209.36 FEET; THENCE NORTH 49°22'56" WEST A DISTANCE OF 160.70 FEET; THENCE NORTH 21°29'50" WEST A DISTANCE OF 89.27 FEET; THENCE NORTH 40°57'51" WEST A DISTANCE OF 56.13 FEET; THENCE NORTH 70°19'27" WEST A DISTANCE OF 115.52 FEET; THENCE SOUTH 78°35'24" WEST A DISTANCE OF 123.65 FEET; THENCE NORTH 10°21'15" WEST A DISTANCE OF 157.15 FEET; THENCE NORTH 01°24'02" WEST A DISTANCE OF 211.35 FEET TO A POINT ON THE NORTH LINE OF SAID SECTION 1; THENCE NORTH 88°42'11" EAST ALONG SAID NORTH LINE A DISTANCE OF 660.00 FEET TO THE POINT OF BEGINNING.

SAID TRACT CONTAINING 347,444.04 S.F. AND 7.98 ACRES, MORE OR LESS.

TUCSON COMMERCIAL, LLC

A TRACT OF LAND SITUATED IN GOVERNMENT LOTS 1 AND 2 OF SECTION 1, TOWNSHIP 17 NORTH, RANGE 14 EAST, OF THE INDIAN BASE AND MERIDIAN, CITY OF BROKEN ARROW, TULSA COUNTY, STATE OF OKLAHOMA, ACCORDING TO THE U.S. GOVERNMENT SURVEY THEREOF, MORE PARTICULARLY DESCRIBED AS FOLLOWS:

COMMENCING AT THE NORTHEAST CORNER OF SAID SECTION 1; THENCE SOUTH 88°42'11" WEST ALONG THE NORTH LINE OF SAID SECTION 1 A DISTANCE OF 660.00 FEET TO THE POINT OF BEGINNING. THENCE SOUTH 01°24'02" EAST A DISTANCE OF 211.35 FEET; THENCE SOUTH 10°21'15" EAST A DISTANCE OF 157.15 FEET; THENCE NORTH 78°35'24" EAST A DISTANCE OF 123.65 FEET; THENCE SOUTH 70°19'27" EAST A DISTANCE OF 115.52 FEET; THENCE SOUTH 40°57'51" EAST A DISTANCE OF 56.13 FEET; THENCE SOUTH 21°29'50" EAST A DISTANCE OF 89.27 FEET; THENCE SOUTH 49°22'56" EAST A DISTANCE OF 160.70 FEET; THENCE SOUTH 41°36'49" EAST A DISTANCE OF 209.36 FEET; THENCE SOUTH 88°36'07" EAST A DISTANCE OF 84.97 FEET TO A POINT ON THE EAST LINE OF SECTION 1; THENCE SOUTH 01°23'53" EAST A DISTANCE OF 546.56 FEET ALONG THE EAST LINE OF SAID SECTION 1; THENCE SOUTH 88°44'26" WEST A DISTANCE OF 1209.92 FEET; THENCE NORTH 01°17'49" WEST A DISTANCE OF 540.93 FEET; THENCE NORTH 88°42'11" EAST A DISTANCE OF 20.48 FEET; THENCE NORTH 01°17'49" WEST A DISTANCE OF 120.00

FEET; THENCE SOUTH 88°42'11" WEST A DISTANCE OF 421.48 FEET; THENCE NORTH 22°59'04" EAST A DISTANCE OF 30.88 FEET; THENCE NORTH 67°00'56" WEST A DISTANCE OF 118.78 FEET; THENCE NORTH 70°57'01" WEST A DISTANCE OF 50.00 FEET; THENCE NORTH 19°03'15" EAST A DISTANCE OF 0.0 FEET TO A POINT OF CURVE; THENCE ON A CURVE TO THE LEFT WITH A RADIUS OF 350.00 FEET AND A DELTA OF 20°27'17" A DISTANCE OF 124.95 FEET HAVING A CHORD BEARING AND DISTANCE OF NORTH 08°49'37" EAST FOR 124.29 FEET; THENCE NORTH 01°24'02" WEST A DISTANCE OF 273.03 FEET; THENCE NORTH 35°03'31" WEST A DISTANCE OF 18.04 FEET; THENCE NORTH 01°24'02" WEST A DISTANCE OF 75.14 FEET; THENCE NORTH 46°20'55" WEST A DISTANCE OF 35.32 FEET; THENCE NORTH 01°17'49" WEST A DISTANCE OF 60.00 FEET TO A POINT ON THE NORTH LINE OF SECTION 1; THENCE NORTH 88°42'11" EAST ALONG THE NORTH LINE OF SAID SECTION 1 A DISTANCE OF 1104.85 FEET TO THE POINT OF BEGINNING.

SAID TRACT CONTAINING 1,596,970 S.F. AND 36.66 ACRES.