

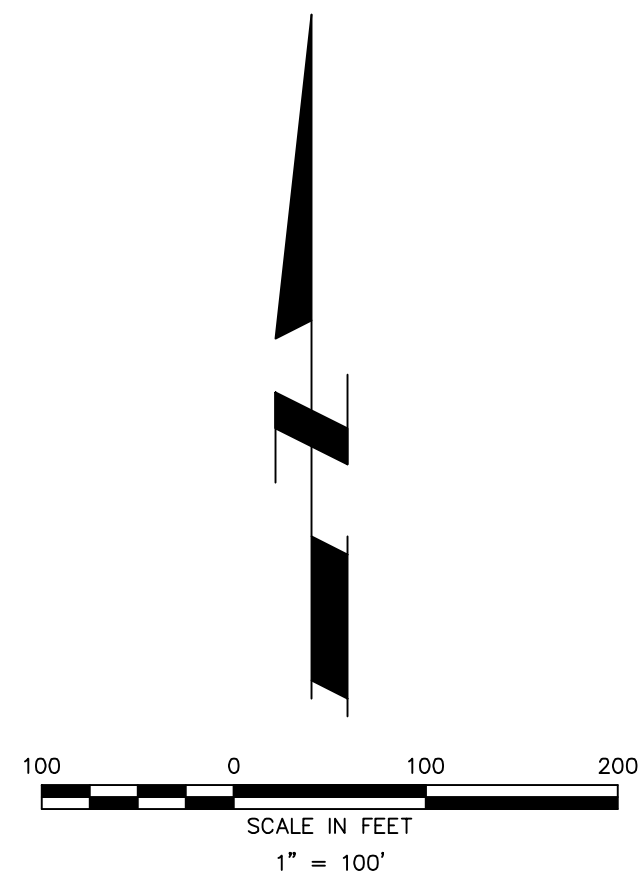
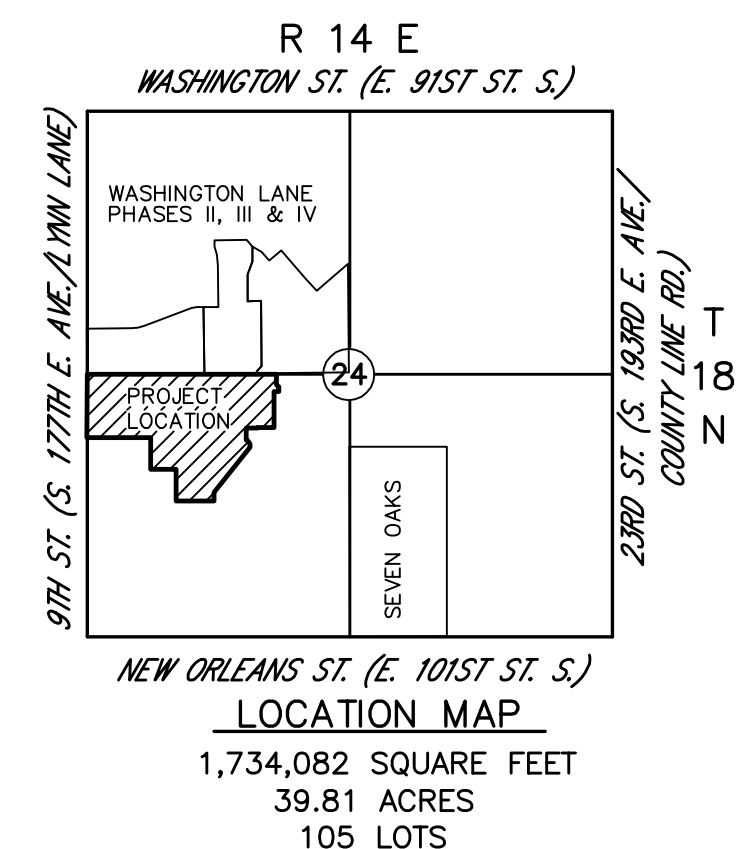
OWNER
JAD DEVELOPMENT, LLC
 2219 E. SKELLY DRIVE
 TULSA, OKLAHOMA 74105
 PHONE: (918) 749-1636

ENGINEER
TUTTLE & ASSOCIATES, INC
 9718 E. 55TH PL.
 TULSA, OKLAHOMA 74146
 (918) 663-5567
 CERTIFICATE OF AUTHORITY CA 465
 EXPIRATION 6-30-07

Preliminary Plat

THE ESTATES AT LYNN LANE

A PART OF THE SW/4, SECTION 24, T-18-N, R-14-E
 AN ADDITION TO THE CITY OF BROKEN, OKLAHOMA

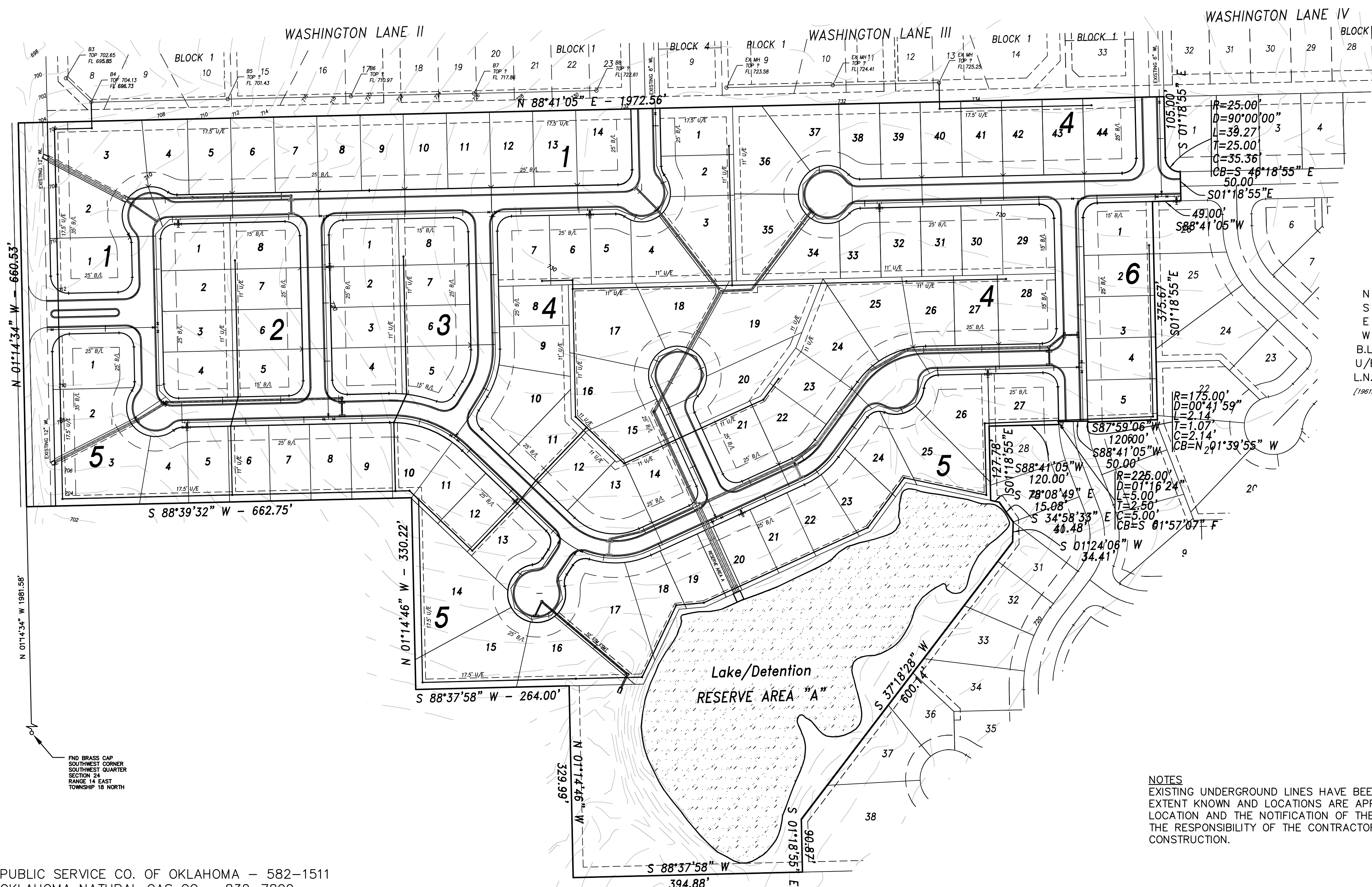


Legal Description:

A tract of land situated in the North 1/4, Southwest 1/4, Section 24, T-18-N, R-14-E, City of Broken Arrow, in the County of Tulsa, in the state of Oklahoma more accurately described as: Beginning at the Northwest Corner of the Southwest 1/4, of said section, known as the Point of Beginning:

thence N 88° 41' 05" E a distance of 1972.56 feet to a point,
 thence S 01° 18' 55" E a distance of 105.00 feet to a point,
 thence on a curve counterclockwise with a radius of 25.00 feet, an angle of 90° 00' 00", length of 39.27 feet and a chord angle of S 46° 18' 55" E with a chord length of 35.36 feet to a point,
 thence S 01° 18' 55" E a distance of 50.00 feet to a point,
 thence S 88° 41' 05" W a distance of 49.00 feet to a point,
 thence S 01° 18' 55" E a distance of 375.67 feet to a point,
 thence S 87° 59' 06" W a distance of 120.00 feet to a point,
 thence on a curve clockwise with a radius of 175.00 feet, an angle of 00° 41' 59", length of 2.14 feet and a chord angle of N 01° 39' 55" W with a chord length of 2.14 feet to a point,
 thence S 88° 41' 05" W a distance of 50.00 feet to a point,
 thence on a curve counterclockwise with a radius of 225.00 feet, an angle of 01° 16' 24", length of 5.00 feet and a chord angle of S 01° 57' 07" E with a chord length of 5.00 feet to a point,
 thence S 88° 41' 05" W a distance of 120.00 feet to a point,
 thence S 01° 18' 55" E a distance of 127.78 feet to a point,
 thence S 78° 08' 49" E a distance of 15.08 feet to a point,
 thence S 34° 58' 33" E a distance of 40.48 feet to a point,
 thence S 01° 24' 06" W a distance of 34.41 feet to a point,
 thence S 37° 18' 28" W a distance of 600.14 feet to a point,
 thence S 01° 18' 55" E a distance of 90.87 feet to a point,
 thence S 88° 37' 58" W a distance of 394.88 feet to a point,
 thence N 01° 14' 46" W a distance of 329.99 feet to a point,
 thence S 88° 37' 58" W a distance of 264.00 feet to a point,
 thence N 01° 14' 46" W a distance of 330.22 feet to a point,
 thence S 88° 39' 32" W a distance of 662.75 feet to a point,
 thence N01° 14' 34" W a distance of 660.53 feet to a point,
 to the Point of Beginning.

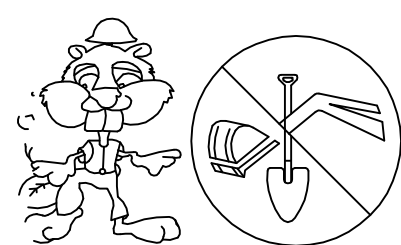
A tract containing 1,734,082.36 square feet or 39.81 acres more or less .



LEGEND

- N NORTH
- S SOUTH
- E EAST
- W WEST
- B.L. BUILDING LINE
- U/E UTILITY EASEMENT
- L.N.A. LIMITS OF NO ACCESS
- (19619) STREET ADDRESS

NOTES
 EXISTING UNDERGROUND LINES HAVE BEEN SHOWN TO THE EXTENT KNOWN AND LOCATIONS ARE APPROXIMATE. THE EXACT LOCATION AND THE NOTIFICATION OF THE PROPER AGENCY IS THE RESPONSIBILITY OF THE CONTRACTOR PRIOR TO ANY CONSTRUCTION.



BEFORE YOU DIG,
 CALL OKIE FOR
 LOCATION OF
 UNDERGROUND UTILITIES.
 1-800-522-6543

PUBLIC SERVICE CO. OF OKLAHOMA - 582-1511
 OKLAHOMA NATURAL GAS CO - 832-7800
 GTE - 665-8500
 TULSA CABLE TELEVISION - 665-0200