

Exhibit B

Development Area Exhibit
for

Tuscon Village

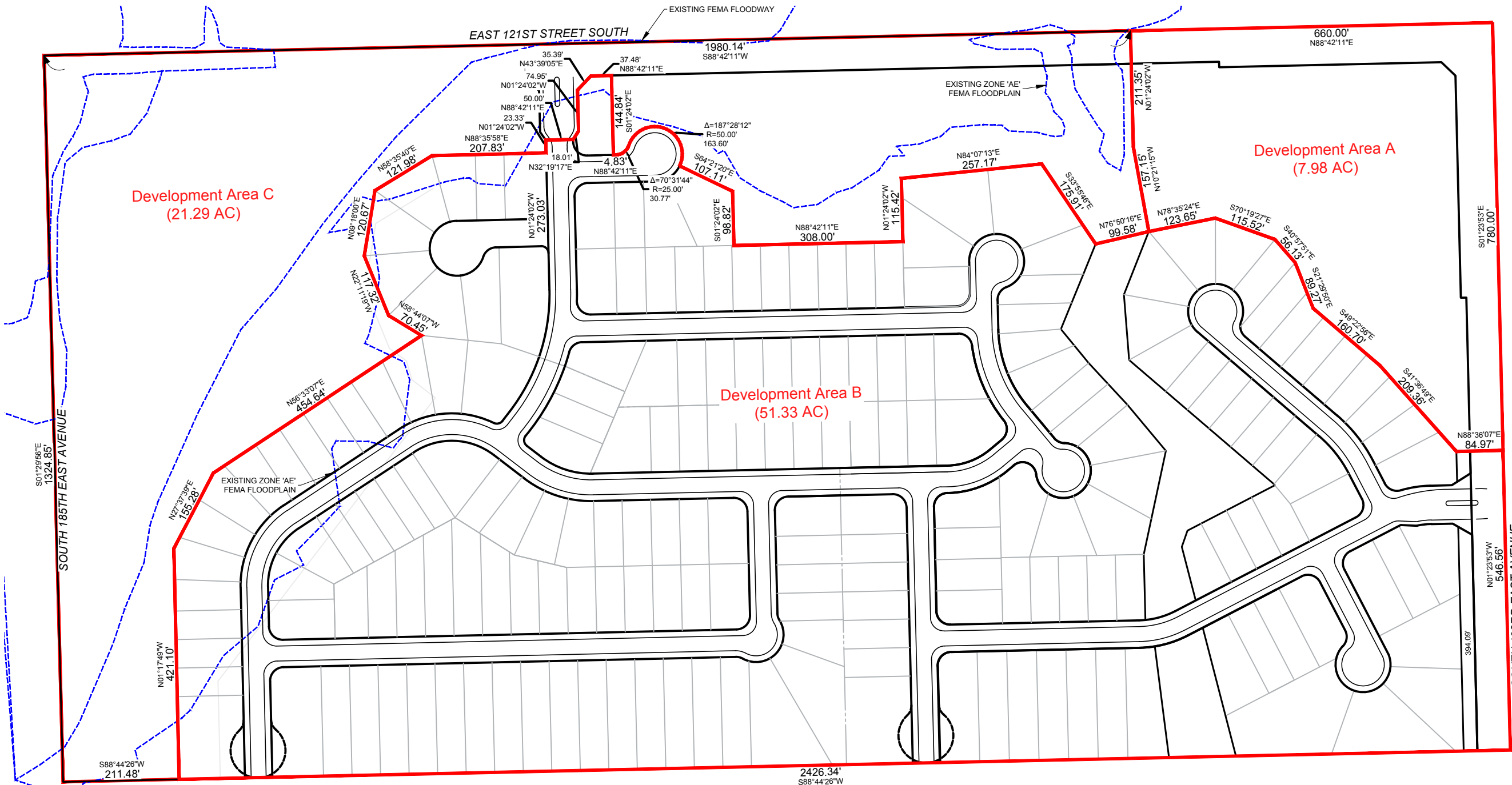
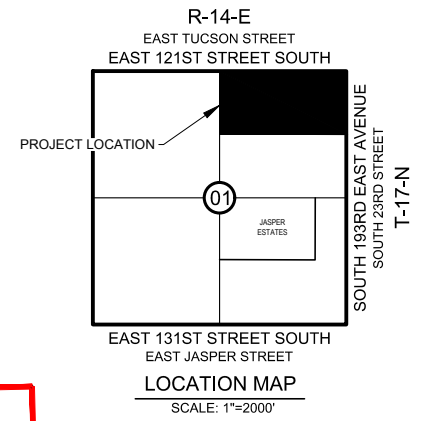
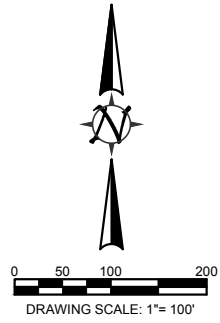


FIG DATE: THU, 03 MAR 2017 FILE: P:\1440\TUSCON VILLAGE\03 - BARREIL\FEM\2017



RECEIVED
MAY 18, 2017
BROKEN ARROW
PLAN DEVELOPMENT

AAB Engineering, LLC
AAB
Engineering • Surveying • Land Planning
PO Box 2136 Sand Springs, OK 74063
Office: (918) 514-4263 Fax: (918) 514-4288